

MS1000 - Datasheet

Single axis analog accelerometer

The MS1000 is the best in class capacitive Bulk MEMS accelerometer, specifically designed for inertial applications. Its excellent long term bias and scale factor repeatability, low in-run bias, excellent behavior in vibration (VRE) and low noise allow very accurate and cost effective tactical grade measurements.

The internal electronic circuit integrates a signal conditioning with a differential analog $\pm 2.7V$ output, a built in self-test and a temperature sensor available for improving accuracy by thermal compensation. The sensor is self-contained and packaged in a 20-pin LCC ceramic housing, thus insuring a full hermeticity for harsh environments.



Key features

- **In-run bias stability (@10s):** 3 μg ($\pm 2g$)
- **Long term bias repeatability:** 0.24mg ($\pm 2g$)
- **Low Noise:** 7 $\mu g/\sqrt{Hz}$ ($\pm 2g$)
- **Non linearity:** $\pm 0.3\%$ (full scale)
- **Qualification based on MIL-STD**
- **LCC20, hermetically sealed package**
- **SWaP¹ :** 9x9x3.5mm³ - 1.5gr - 10mW
- **Operational Temperature:** [-40 ; +125] $^{\circ}C$

Key Parameter, typical values	MS1002*	MS1005*	MS1010*	MS1016	MS1030	MS1050	MS1100	Unit
Full-Scale acceleration	± 2	± 5	± 10	± 16	± 30	± 50	± 100	g
In run bias stability (@10s)	3	7.5	15	24	45	75	150	μg
Noise in band	7	17	34	54	102	170	340	$\mu g/\sqrt{Hz}$
Long-term Bias Repeatability²	0.24	0.6	1.2	1.9	3.6	6.0	12.0	mg
Bias Temperature Coefficient	0.07	0.18	0.37	0.6	1.1	1.8	3.7	mg/ $^{\circ}C$
Scale Factor Sensitivity	1350	540	270	169	90	54	27	mV/g
Residual Bias modeling error	0.14	0.35	0.7	1.1	2.1	3.5	7.0	mg

* The MS1002, MS1005, MS1010 accelerometers are dual-use goods (category 7A101) and as such are subject to export control.

¹:SWaP: Size, Weight and Power.

²:See Glossary

Featured Applications (non-exhaustive):

Aerospace & Defense:

Inertial Measurement Units (IMUs)
 Attitude and Heading Reference System (AHRS)
 Flight Control System
 Weapon launch systems – platform stabilization
 GPS aided guidance & navigation UAV systems
 short and mid range guidance
 Satellites

Naval & Land:

Autonomous Vehicles, Robotics
 North finding, antenna, sonar orientation
 ROV guidance, weapon launch systems,
 Ship navigation and control
 Mobile mapping
 Train positioning (GPS dead reckoning)
 MWD – drilling guidance

MS1002 PARAMETERS

All values are specified at ambient temperature (20°C) and at 3.3 V supply voltage V_{DD} , unless otherwise stated. Acceleration values are defined for differential signal (OUTP-OUTN).

Parameter	Comments	Min	Typ.	Max	Unit
Accelerometer					
Full scale		±2			g
Non-Linearity	IEEE Norm , % of full scale		0.3	1.0	%
Frequency response	-3dB	200			Hz
Resonant frequency	Overdamped		1.4		kHz
Vibration rectification error	Mean value over [50Hz , 2kHz]		1'300		µg/g ²
Noise	in band		7		µg/√Hz
Resolution	@ 1Hz		7		µg rms
Startup time	Sensor operational, delay once POR triggered		40		µs
Bias (K0)					
Nominal	Calibration accuracy	-7		7	mg
Temperature coefficient	Measured over [-40°C , 85°C]		75		µg/°C
Initial residual modeling error	3 rd order temperature compensation [-40°C , 85°C]		0.14		mg
Long-term repeatability	See glossary		0.24		mg
In-run bias stability	Based on Allan Variance characterization (@ 10s)		3		µg
TurnON - TurnON	See glossary		15		µg
Scale factor (K1)					
Nominal	Calibration accuracy	1.33	1.35	1.37	V/g
Temperature coefficient	Measured over [-40°C , 85°C]	20	120	220	ppm/°C
Initial residual modeling error	3 rd order temperature compensation [-40°C , 85°C]	-300	120	300	ppm
Long-term repeatability	See glossary		400		ppm
Axis misalignment					
Nominal		-10		10	mrad
Self-test					
Frequency	Square wave output	22	24.4	26.8	Hz
Duty cycle			50		%
Amplitude	Peak to peak		1.0		g
Input threshold voltage	active high	80			% V_{DD}
Temperature sensor					
Output voltage @20°C		1.20	1.23	1.26	V
Sensitivity			-4.0		mV/°C
Output current load				10	µA
Output capacitive load				10	pF
Reset					
Input threshold voltage	active low			20	% V_{DD}
Power requirements					
Supply voltage (V_{DD})		3.2	3.3	3.4	V
Supply current (I_{DD})			2.3	4	mA
Accelerometer outputs					
Output voltages	OutP, OutN over full scale	0.14		3.16	V
Differential output	Over full scale		±2.7		V
Resistive load		1000			kΩ
Capacitive load				100	pF
General					
Reliability assessment	Based on FIDES 2009 Edition A Sept. 2010, available on request.				

Table 1: MS1002 Specifications

MS1005 PARAMETERS

All values are specified at ambient temperature (20°C) and at 3.3 V supply voltage V_{DD} , unless otherwise stated. Acceleration values are defined for differential signal (OUTP-OUTN).

Parameter	Comments	Min	Typ.	Max	Unit
Accelerometer					
Full scale		±5			g
Non-Linearity	IEEE Norm , % of full scale		0.3	1.0	%
Frequency response	-3dB	200			Hz
Resonant frequency	Overdamped		2.2		kHz
Vibration rectification error	Mean value over [50Hz , 2kHz]		680		$\mu\text{g}/\text{g}^2$
Noise	in band		17		$\mu\text{g}/\sqrt{\text{Hz}}$
Resolution	@ 1Hz		17		$\mu\text{g rms}$
Startup time	Sensor operational, delay once POR triggered		40		μs
Bias (K0)					
Nominal	Calibration accuracy	-17		17	mg
Temperature coefficient	Measured over [-40°C , 85°C]		187		$\mu\text{g}/^\circ\text{C}$
Initial residual modeling error	3 rd order temperature compensation [-40°C , 85°C]		0.35		mg
Long-term repeatability	See glossary		0.6		mg
In-run bias stability	Based on Allan Variance characterization (@ 10s)		7.5		μg
TurnON - TurnON	See glossary		37.5		μg
Scale factor (K1)					
Nominal	Calibration accuracy	532	540	548	mV/g
Temperature coefficient	Measured over [-40°C , 85°C]	20	120	220	ppm/°C
Initial residual modeling error	3 rd order temperature compensation [-40°C , 85°C]	-300	120	300	ppm
Long-term repeatability	See glossary		400		ppm
Axis misalignment					
Nominal		-10		10	mrad
Self-test					
Frequency	Square wave output	22	24.4	26.8	Hz
Duty cycle			50		%
Amplitude	Peak to peak		1.0		g
Input threshold voltage	active high	80			% V_{DD}
Temperature sensor					
Output voltage @20°C		1.20	1.23	1.26	V
Sensitivity			-4.0		mV/°C
Output current load				10	μA
Output capacitive load				10	pF
Reset					
Input threshold voltage	active low			20	% V_{DD}
Power requirements					
Supply voltage (V_{DD})		3.2	3.3	3.4	V
Supply current (I_{DD})			2.3	4	mA
Accelerometer outputs					
Output voltages	OutP, OutN over full scale	0.14		3.16	V
Differential output	Over full scale		±2.7		V
Resistive load		1000			k Ω
Capacitive load				100	pF
General					
Reliability assessment	Based on FIDES 2009 Edition A Sept. 2010, available on request.				

Table 2: MS1005 Specifications

MS1010 PARAMETERS

All values are specified at ambient temperature (20°C) and at 3.3 V supply voltage V_{DD} , unless otherwise stated. Acceleration values are defined for differential signal (OUTP-OUTN).

Parameter	Comments	Min	Typ.	Max	Unit
Accelerometer					
Full scale		±10			g
Non-Linearity	IEEE Norm , % of full scale		0.3	1.0	%
Frequency response	-3dB	200			Hz
Resonant frequency	Overdamped		3.7		kHz
Vibration rectification error	Mean value over [50Hz , 2kHz]		290		µg/g ²
Noise	in band		34		µg/√Hz
Resolution	@ 1Hz		34		µg rms
Startup time	Sensor operational, delay once POR triggered		40		µs
Bias (K0)					
Nominal	Calibration accuracy	-34		34	mg
Temperature coefficient	Measured over [-40°C , 85°C]		375		µg/°C
Initial residual modeling error	3 rd order temperature compensation [-40°C , 85°C]		0.7		mg
Long-term repeatability	See glossary		1.2		mg
In-run bias stability	Based on Allan Variance characterization (@ 10s)		15		µg
TurnON - TurnON	See glossary		75		µg
Scale factor (K1)					
Nominal	Calibration accuracy	266	270	274	mV/g
Temperature coefficient	Measured over [-40°C , 85°C]	20	120	220	ppm/°C
Initial residual modeling error	3 rd order temperature compensation [-40°C , 85°C]	-300	120	300	ppm
Long-term repeatability	See glossary		400		ppm
Axis misalignment					
Nominal		-10		10	mrad
Self-test					
Frequency	Square wave output	22	24.4	26.8	Hz
Duty cycle			50		%
Amplitude	Peak to peak		1.0		g
Input threshold voltage	active high	80			% V_{DD}
Temperature sensor					
Output voltage @20°C		1.20	1.23	1.26	V
Sensitivity			-4.0		mV/°C
Output current load				10	µA
Output capacitive load				10	pF
Reset					
Input threshold voltage	active low			20	% V_{DD}
Power requirements					
Supply voltage (V_{DD})		3.2	3.3	3.4	V
Supply current (I_{DD})			2.3	4	mA
Accelerometer outputs					
Output voltages	OutP, OutN over full scale	0.14		3.16	V
Differential output	Over full scale		±2.7		V
Resistive load		1000			kΩ
Capacitive load				100	pF
General					
Reliability assessment	Based on FIDES 2009 Edition A Sept. 2010, available on request.				

Table 3: MS1010 Specifications

MS1016 PARAMETERS

All values are specified at ambient temperature (20°C) and at 3.3 V supply voltage V_{DD} , unless otherwise stated. Acceleration values are defined for differential signal (OUTP-OUTN).

Parameter	Comments	Min	Typ.	Max	Unit
Accelerometer					
Full scale		±16			g
Non-Linearity	IEEE Norm , % of full scale		0.3	1.0	%
Frequency response	-3dB	200			Hz
Resonant frequency	Overdamped		8		kHz
Vibration rectification error	Mean value over [50Hz , 2kHz]		230		$\mu\text{g}/\text{g}^2$
Noise	in band		54		$\mu\text{g}/\sqrt{\text{Hz}}$
Resolution	@ 1Hz		54		$\mu\text{g rms}$
Startup time	Sensor operational, delay once POR triggered		40		μs
Bias (K0)					
Nominal	Calibration accuracy	-54		54	mg
Temperature coefficient	Measured over [-40°C , 85°C]		600		$\mu\text{g}/^\circ\text{C}$
Initial residual modeling error	3 rd order temperature compensation [-40°C , 85°C]		1.1		mg
Long-term repeatability	See glossary		1.9		mg
In-run bias stability	Based on Allan Variance characterization (@ 10s)		24		μg
TurnON - TurnON	See glossary		120		μg
Scale factor (K1)					
Nominal	Calibration accuracy	166	169	172	mV/g
Temperature coefficient	Measured over [-40°C , 85°C]	20	120	220	ppm/°C
Initial residual modeling error	3 rd order temperature compensation [-40°C , 85°C]	-300	120	300	ppm
Long-term repeatability	See glossary		400		ppm
Axis misalignment					
Nominal		-10		10	mrad
Self-test					
Frequency	Square wave output	22	24.4	26.8	Hz
Duty cycle			50		%
Amplitude	Peak to peak		1.0		g
Input threshold voltage	active high	80			% V_{DD}
Temperature sensor					
Output voltage @20°C		1.20	1.23	1.26	V
Sensitivity			-4.0		mV/°C
Output current load				10	μA
Output capacitive load				10	pF
Reset					
Input threshold voltage	active low			20	% V_{DD}
Power requirements					
Supply voltage (V_{DD})		3.2	3.3	3.4	V
Supply current (I_{DD})			2.3	4	mA
Accelerometer outputs					
Output voltages	OutP, OutN over full scale	0.14		3.16	V
Differential output	Over full scale		±2.7		V
Resistive load		1000			k Ω
Capacitive load				100	pF
General					
Reliability assessment	Based on FIDES 2009 Edition A Sept. 2010, available on request.				

Table 4: MS1016 Specifications

MS1030 PARAMETERS

All values are specified at ambient temperature (20°C) and at 3.3 V supply voltage V_{DD} , unless otherwise stated. Acceleration values are defined for differential signal (OUTP-OUTN).

Parameter	Comments	Min	Typ.	Max	Unit
Accelerometer					
Full scale		±30			g
Non-Linearity	IEEE Norm , % of full scale		0.3	1.0	%
Frequency response	-3dB	200			Hz
Resonant frequency	Overdamped		>8		kHz
Vibration rectification error	Mean value over [50Hz , 2kHz]		170		$\mu\text{g}/\text{g}^2$
Noise	in band		102		$\mu\text{g}/\sqrt{\text{Hz}}$
Resolution	@ 1Hz		102		$\mu\text{g rms}$
Startup time	Sensor operational, delay once POR triggered		40		μs
Bias (K0)					
Nominal	Calibration accuracy	-100		100	mg
Temperature coefficient	Measured over [-40°C , 85°C]		1.125		$\text{mg}/^\circ\text{C}$
Initial residual modeling error	3 rd order temperature compensation [-40°C , 85°C]		2.1		mg
Long-term repeatability	See glossary		3.6		mg
In-run bias stability	Based on Allan Variance characterization (@ 10s)		45		μg
TurnON - TurnON	See glossary		225		μg
Scale factor (K1)					
Nominal	Calibration accuracy	88.5	90	91.5	mV/g
Temperature coefficient	Measured over [-40°C , 85°C]	20	120	220	ppm/ $^\circ\text{C}$
Initial residual modeling error	3 rd order temperature compensation [-40°C , 85°C]	-300	120	300	ppm
Long-term repeatability	See glossary		400		ppm
Axis misalignment					
Nominal		-10		10	mrad
Self-test					
Frequency	Square wave output	22	24.4	26.8	Hz
Duty cycle			50		%
Amplitude	Peak to peak		1.0		g
Input threshold voltage	active high	80			% V_{DD}
Temperature sensor					
Output voltage @20°C		1.20	1.23	1.26	V
Sensitivity			-4.0		$\text{mV}/^\circ\text{C}$
Output current load				10	μA
Output capacitive load				10	pF
Reset					
Input threshold voltage	active low			20	% V_{DD}
Power requirements					
Supply voltage (V_{DD})		3.2	3.3	3.4	V
Supply current (I_{DD})			2.3	4	mA
Accelerometer outputs					
Output voltages	OutP, OutN over full scale	0.14		3.16	V
Differential output	Over full scale		±2.7		V
Resistive load		1000			k Ω
Capacitive load				100	pF
General					
Reliability assessment	Based on FIDES 2009 Edition A Sept. 2010, available on request.				

Table 5: MS1030 Specifications

MS1050 PARAMETERS

All values are specified at ambient temperature (20°C) and at 3.3 V supply voltage V_{DD}, unless otherwise stated. Acceleration values are defined for differential signal (OUTP-OUTN).

Parameter	Comments	Min	Typ.	Max	Unit
Accelerometer					
Full scale		±50			g
Non-Linearity	IEEE Norm , % of full scale		0.3	1.0	%
Frequency response	-3dB	200			Hz
Resonant frequency	Overdamped		TBD		kHz
Vibration rectification error	Mean value over [50Hz , 2kHz]		68		µg/g ²
Noise	in band		170		µg/√Hz
Resolution	@ 1Hz		170		µg rms
Startup time	Sensor operational, delay once POR triggered		40		µs
Bias (K0)					
Nominal	Calibration accuracy	-170		170	mg
Temperature coefficient	Measured over [-40°C , 85°C]		1.87		mg/°C
Initial residual modeling error	3 rd order temperature compensation [-40°C , 85°C]		3.5		mg
Long-term repeatability	See glossary		6		mg
In-run bias stability	Based on Allan Variance characterization (@ 10s)		75		µg
TurnON - TurnON	See glossary		375		µg
Scale factor (K1)					
Nominal	Calibration accuracy	53.2	54	54.8	mV/g
Temperature coefficient	Measured over [-40°C , 85°C]	20	120	220	ppm/°C
Initial residual modeling error	3 rd order temperature compensation [-40°C , 85°C]	-300	120	300	ppm
Long-term repeatability	See glossary		400		ppm
Axis misalignment					
Nominal		-10		10	mrad
Self-test					
Frequency	Square wave output	22	24.4	26.8	Hz
Duty cycle			50		%
Amplitude	Peak to peak		1.0		g
Input threshold voltage	active high	80			% V _{DD}
Temperature sensor					
Output voltage @20°C		1.20	1.23	1.26	V
Sensitivity			-4.0		mV/°C
Output current load				10	µA
Output capacitive load				10	pF
Reset					
Input threshold voltage	active low			20	% V _{DD}
Power requirements					
Supply voltage (V _{DD})		3.2	3.3	3.4	V
Supply current (I _{DD})			2.3	4	mA
Accelerometer outputs					
Output voltages	OutP, OutN over full scale	0.14		3.16	V
Differential output	Over full scale		±2.7		V
Resistive load		1000			kΩ
Capacitive load				100	pF
General					
Reliability assessment	Based on FIDES 2009 Edition A Sept. 2010, available on request.				

Table 6: MS1050 Specifications

MS1100 PARAMETERS

All values are specified at ambient temperature (20°C) and at 3.3 V supply voltage V_{DD} , unless otherwise stated. Acceleration values are defined for differential signal (OUTP-OUTN).

Parameter	Comments	Min	Typ.	Max	Unit
Accelerometer					
Full scale		±100			g
Non-Linearity	IEEE Norm , % of full scale		0.3	1.0	%
Frequency response	-3dB	200			Hz
Resonant frequency	Overdamped		>8		kHz
Vibration rectification error	Mean value over [50Hz , 2kHz]		31		µg/g ²
Noise	in band		340		µg/√Hz
Resolution	@ 1Hz		340		µg rms
Startup time	Sensor operational, delay once POR triggered		40		µs
Bias (K0)					
Nominal	Calibration accuracy	-333		333	mg
Temperature coefficient	Measured over [-40°C , 85°C]		3.7		mg/°C
Initial residual modeling error	3 rd order temperature compensation [-40°C , 85°C]		7		mg
Long-term repeatability	See glossary		12		mg
In-run bias stability	Based on Allan Variance characterization (@ 10s)		150		µg
TurnON - TurnON	See glossary		750		µg
Scale factor (K1)					
Nominal	Calibration accuracy	26	27	28	mV/g
Temperature coefficient	Measured over [-40°C , 85°C]	20	120	220	ppm/°C
Initial residual modeling error	3 rd order temperature compensation [-40°C , 85°C]	-300	120	300	ppm
Long-term repeatability	See glossary		400		ppm
Axis misalignment					
Nominal		-10		10	mrad
Self-test					
Frequency	Square wave output	22	24.4	26.8	Hz
Duty cycle			50		%
Amplitude	Peak to peak		1.0		g
Input threshold voltage	active high	80			% V_{DD}
Temperature sensor					
Output voltage @20°C		1.20	1.23	1.26	V
Sensitivity			-4.0		mV/°C
Output current load				10	µA
Output capacitive load				10	pF
Reset					
Input threshold voltage	active low			20	% V_{DD}
Power requirements					
Supply voltage (V_{DD})		3.2	3.3	3.4	V
Supply current (I_{DD})			2.3	4	mA
Accelerometer outputs					
Output voltages	OutP, OutN over full scale	0.14		3.16	V
Differential output	Over full scale		±2.7		V
Resistive load		1000			kΩ
Capacitive load				100	pF
General					
Reliability assessment	Based on FIDES 2009 Edition A Sept. 2010, available on request.				

Table 7: MS1100 Specifications

Absolute maximum ratings

Absolute maximum ratings are stress ratings. Stress in excess of the environmental specifications in the datasheet can cause permanent damage to the device. Exposure to the maximum ratings for an extended period of time may degrade the performance and affect reliability.

Parameter	Comments	Min	Typ	Max	Unit
Supply voltage (V_{DD})		-0.3		+3.9	V
Voltage at any PIN		-0.3		$V_{DD} + 0.3$	V
Operational temperature		-40		125	°C
Storage temperature		-55		125	°C
Vibration	Random / 20-2'000Hz			20	g
Shock	Single shock / 0.2ms / 6 directions			1'500	g
ESD stress	HBM model	-1		1	kV

Table 8: Absolute maximum ratings

Typical performances characteristics

MS1002: Typical initial performances on multiple sensor at 3.3 VDC supply voltage (V_{DD}) and ambient temperature for all graphs, unless otherwise stated (multiple sensor: multiple color line / min/max: red line / typical value: green line).

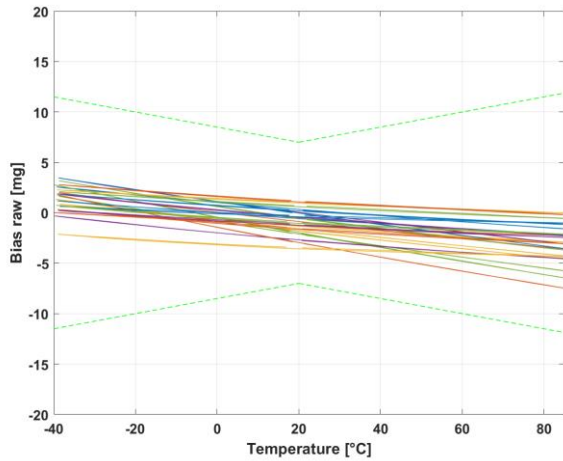


Figure 1: Raw Bias over temperature

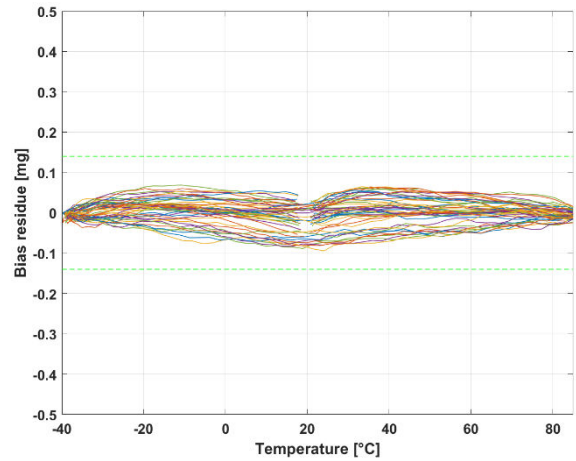


Figure 2 : Residual Bias over temperature

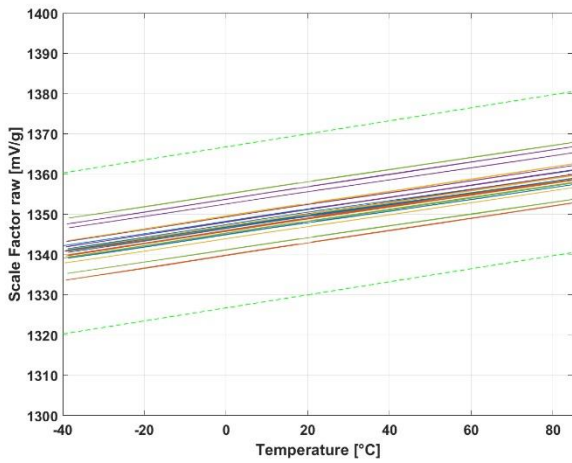


Figure 3: Raw Scale Factor over temperature

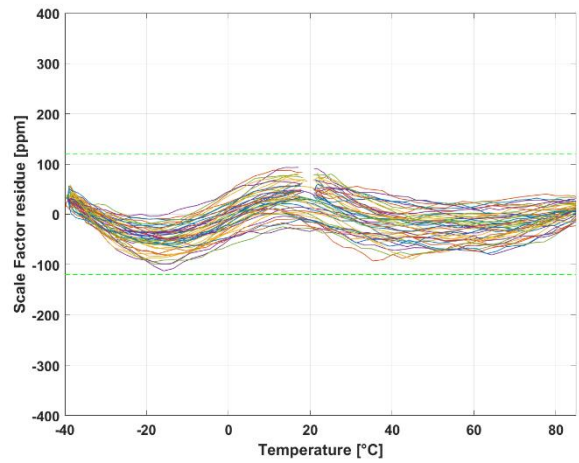


Figure 4: Residual Scale Factor over temperature

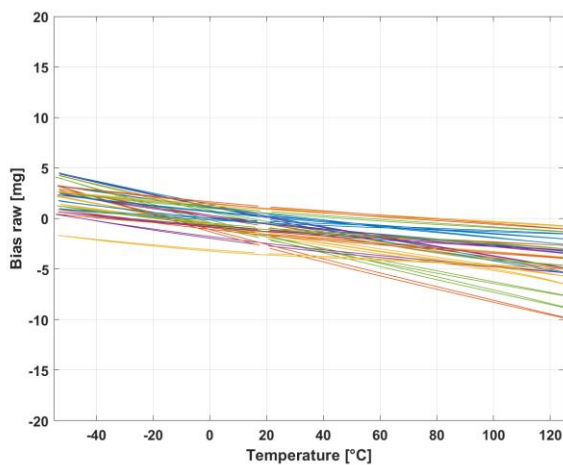


Figure 5: Raw bias over [-55°C to +125°C]

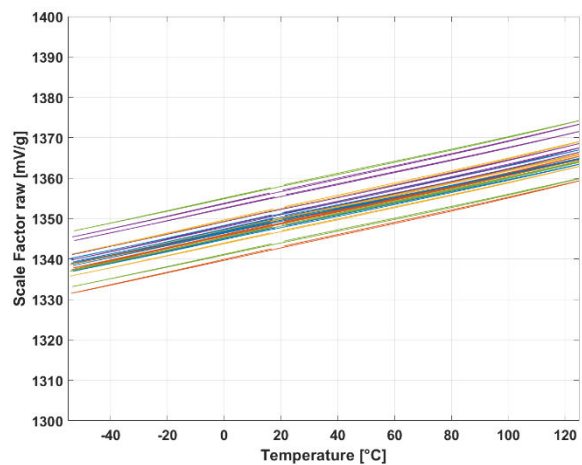


Figure 6: Raw scale factor over [-55°C to +125°C]

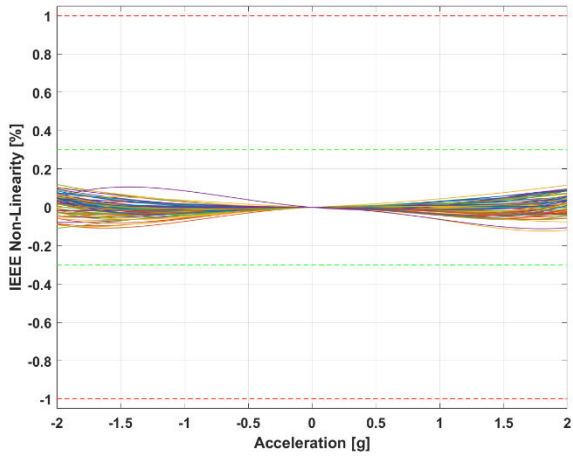


Figure 7 : Non-linearity IEEE

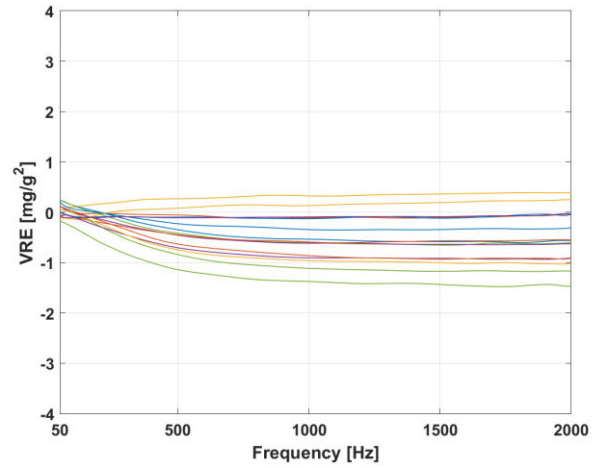


Figure 8: Vibration Rectification Error

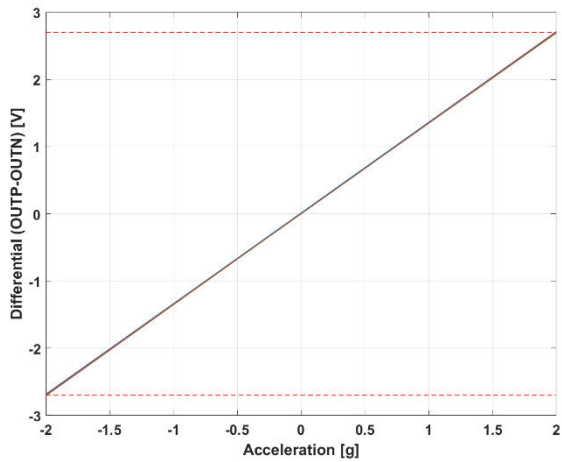


Figure 9 : Differential acceleration output (OUTP-OUTN) at full scale

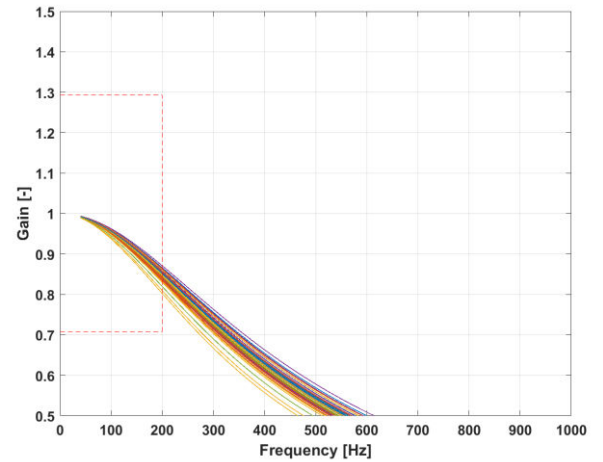


Figure 10 : Frequency response

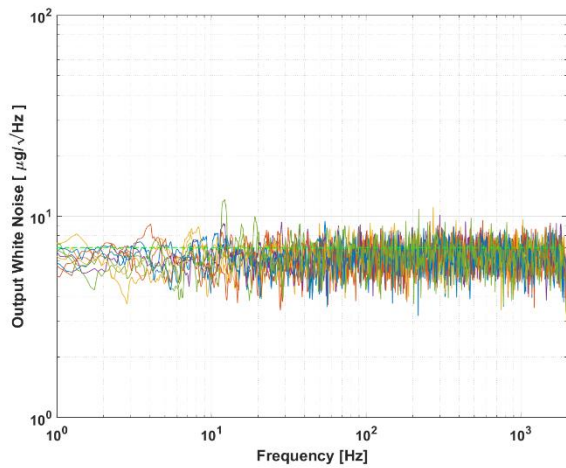


Figure 11: Typical white noise

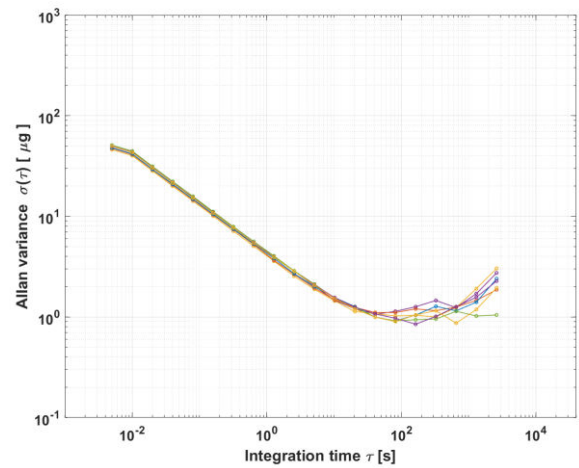


Figure 12: Allan Variance

MS1005: Typical initial performances on multiple sensor at 3.3 VDC supply voltage (V_{DD}) and ambient temperature for all graphs, unless otherwise stated (multiple sensor: multiple color line / min/max: red line / typical value: green line).

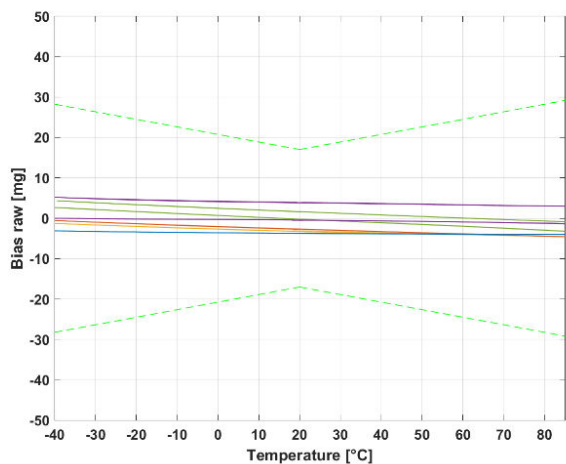


Figure 13: Raw Bias over temperature

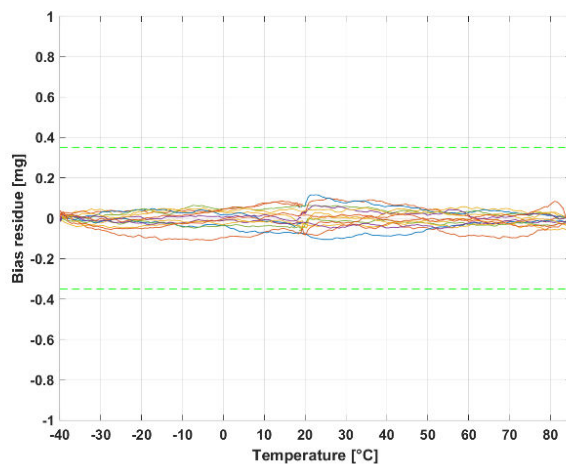


Figure 14 : Residual bias over temperature

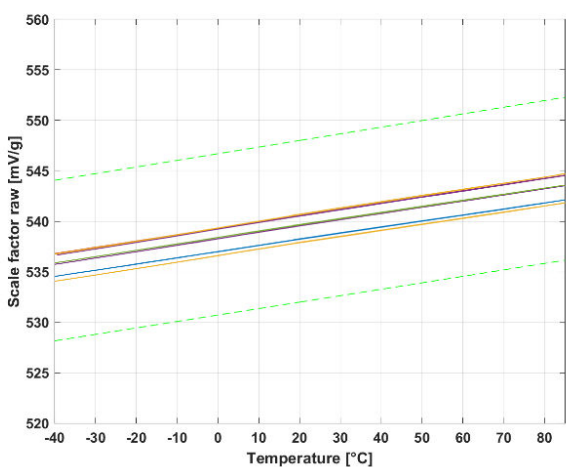


Figure 15: Raw Scale Factor over temperature

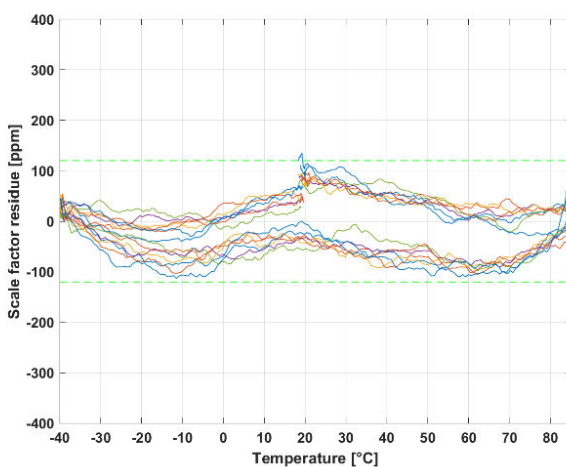


Figure 16: Residual Scale Factor over temperature

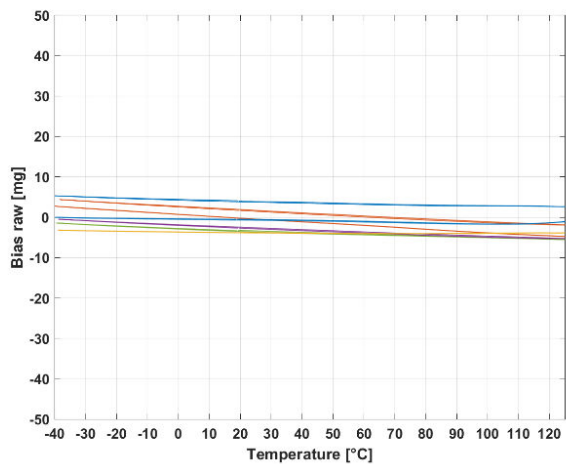


Figure 17: Raw bias over [-40°C to +125°C]

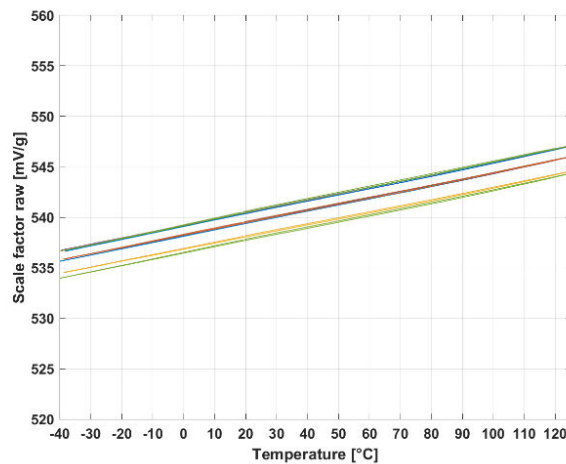


Figure 18: Raw scale factor over [-40°C to +125°C]

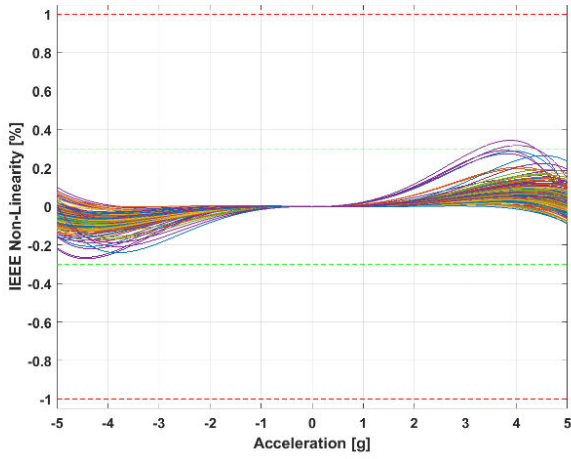


Figure 19 : Non-linearity IEEE

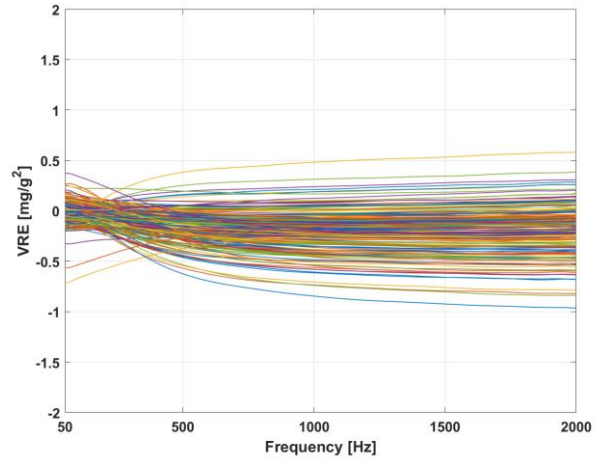


Figure 20: Vibration Rectification Error

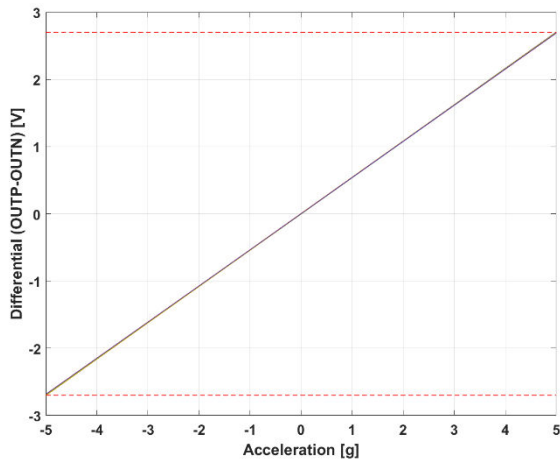


Figure 21 : Differential acceleration output (OUTP-OUTN) at full scale

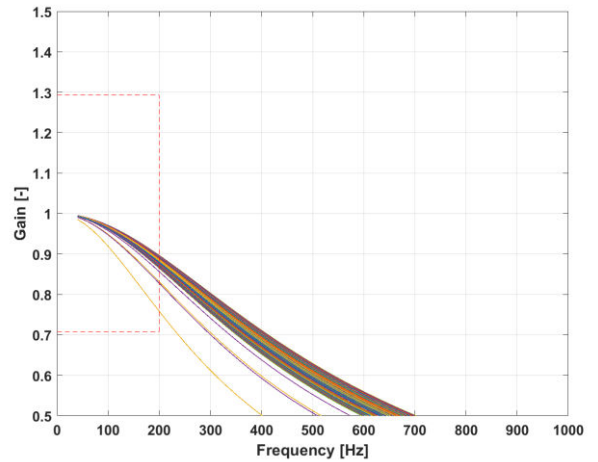


Figure 22 : Frequency response

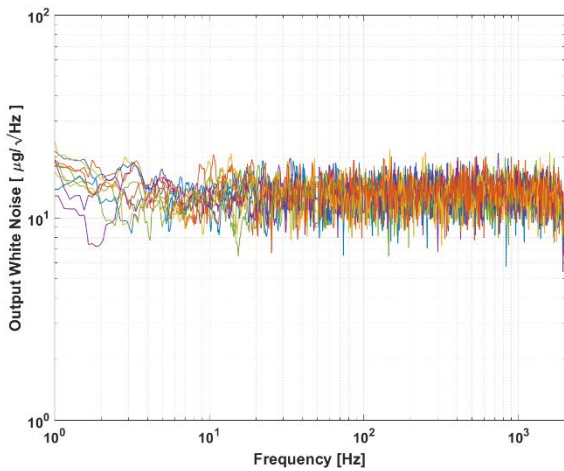


Figure 23: Typical white noise

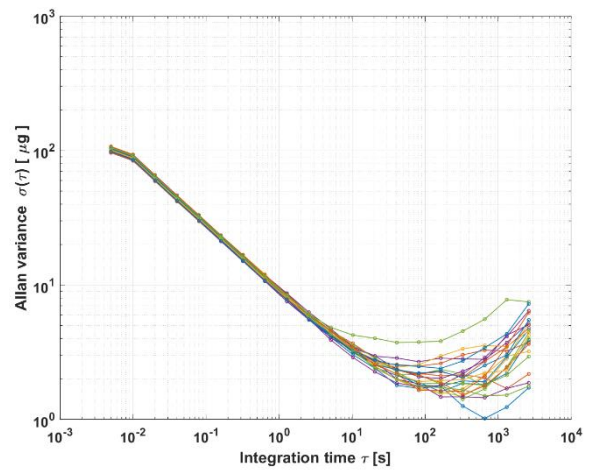


Figure 24: Allan Variance

MS1010: Typical initial performances on multiple sensor at 3.3 VDC supply voltage (V_{DD}) and ambient temperature for all graphs, unless otherwise stated (multiple sensor: multiple color line / min/max: red line / typical value: green line).

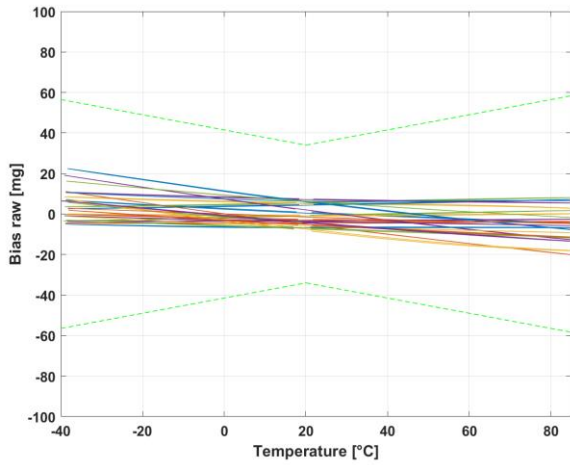


Figure 25: Raw Bias over temperature

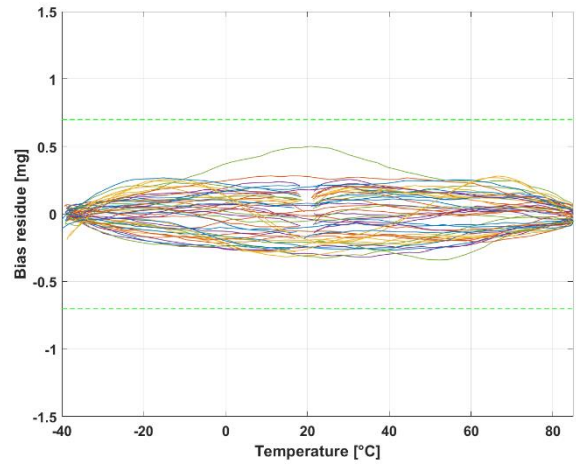


Figure 26: Residual Bias over temperature

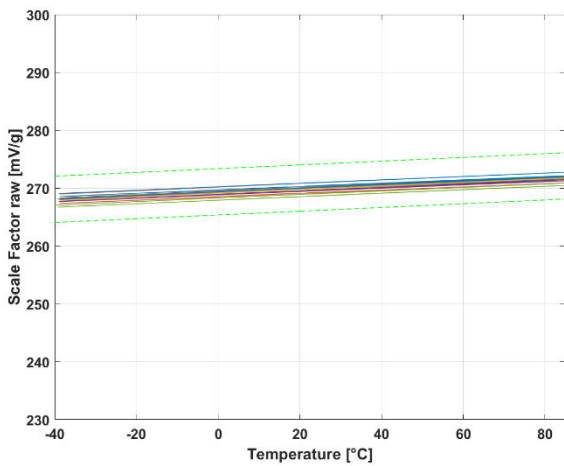


Figure 27: Raw Scale Factor over temperature

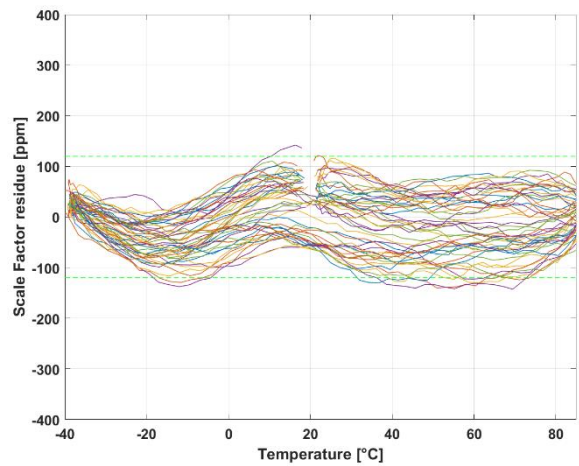


Figure 28: Residual Scale Factor over temperature

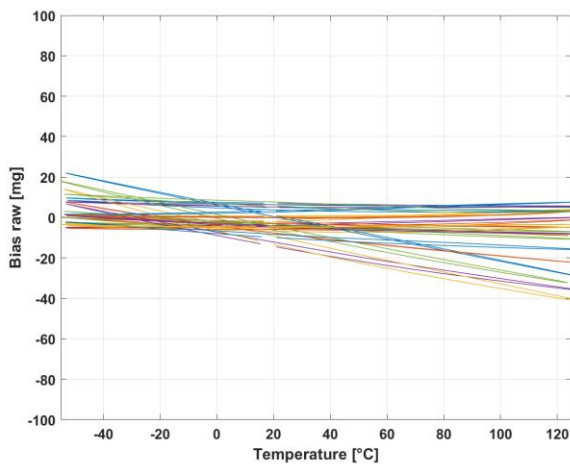


Figure 29: Raw bias over [-55°C to +125°C]

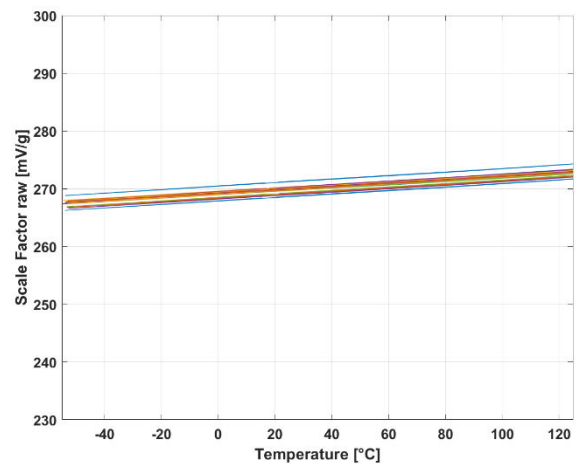


Figure 30: Raw scale factor over [-55°C to +125°C]

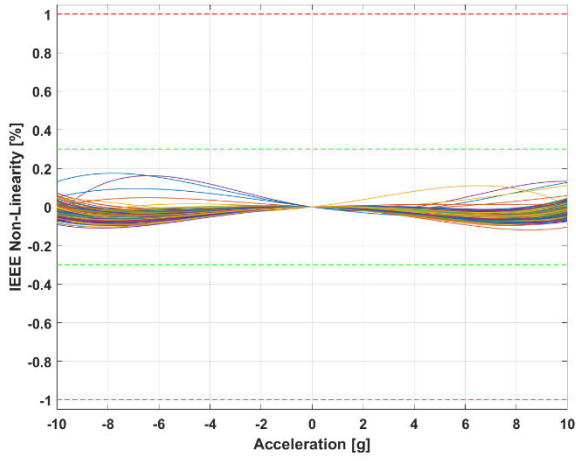


Figure 31 : Non-linearity IEEE

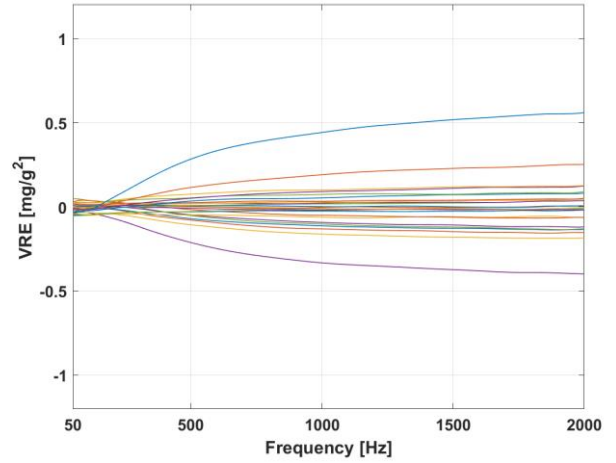


Figure 28: Vibration Rectification Error

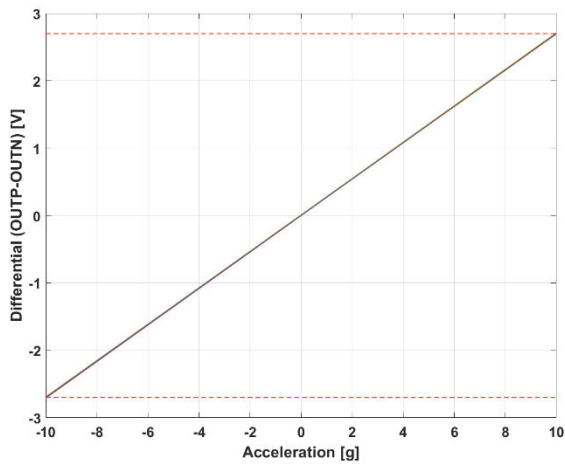


Figure 32 : Differential acceleration output (OUTP-OUTN) at full scale

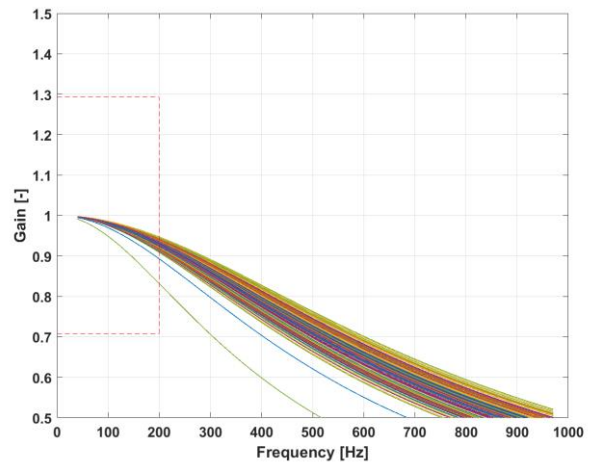


Figure 33 : Frequency response

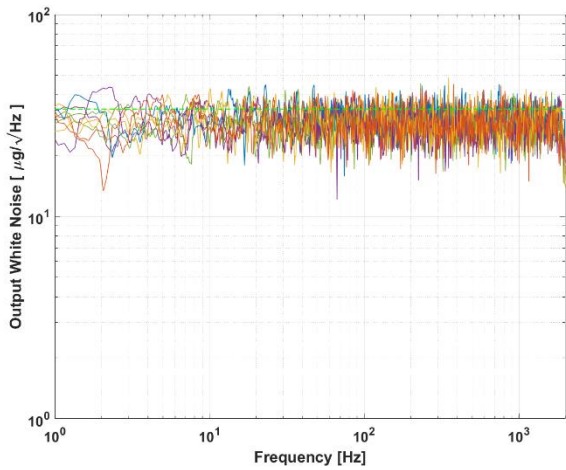


Figure 34: Typical white noise

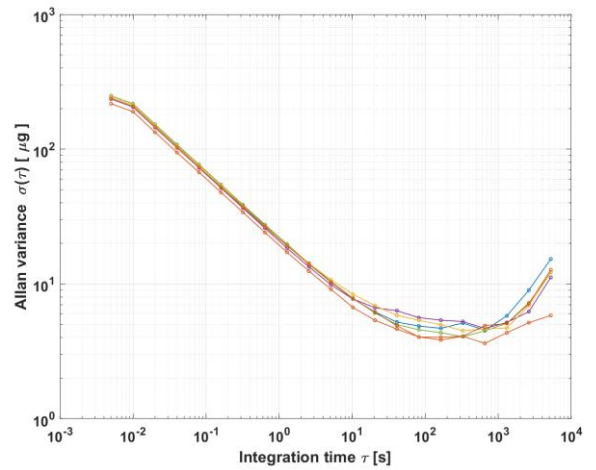


Figure 35: Allan Variance

MS1016: Typical initial performances on multiple sensor at 3.3 VDC supply voltage (V_{DD}) and ambient temperature for all graphs, unless otherwise stated (multiple sensor: multiple color line / min/max: red line / typical value: green line).

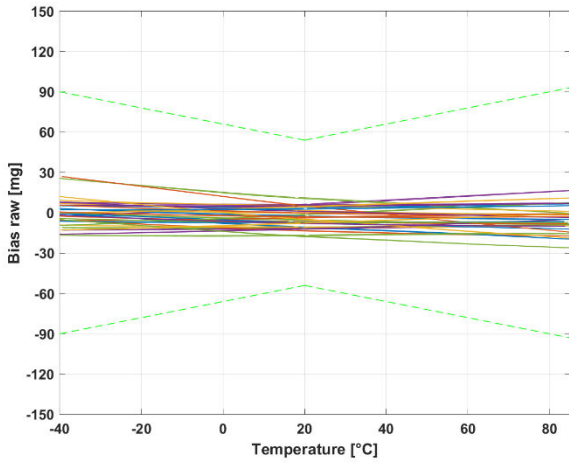


Figure 36: Raw bias over temperature

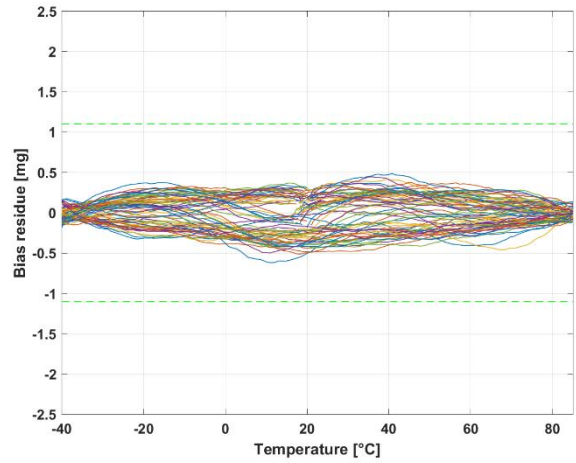


Figure 37: Residual bias over temperature

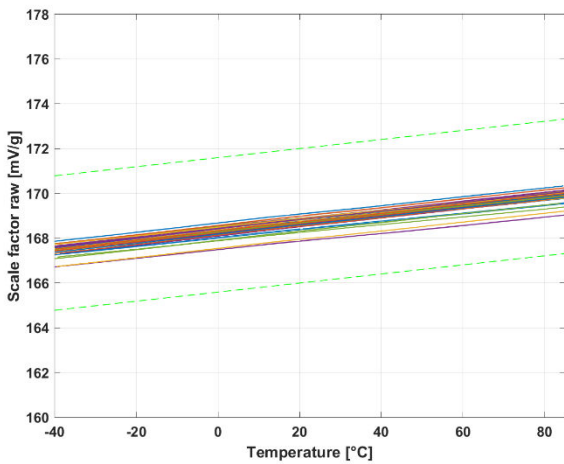


Figure 38: Raw Scale Factor over temperature

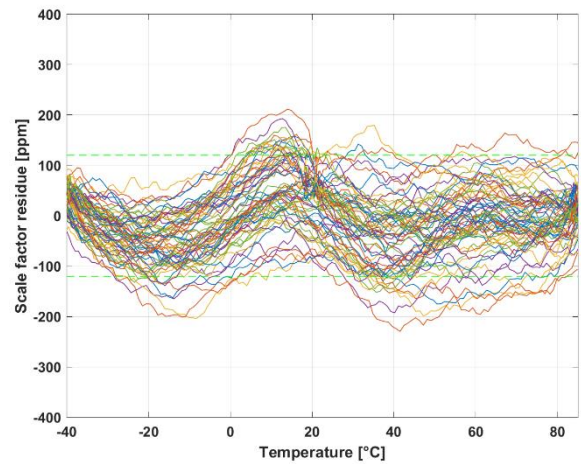


Figure 39: Residual Scale Factor over temperature

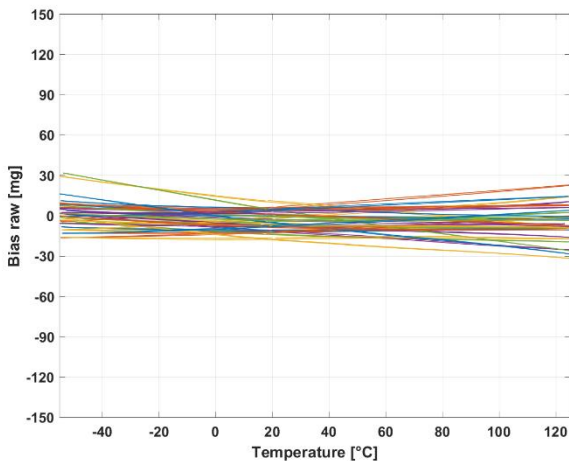


Figure 40: Raw bias over [-55°C to +125°C]

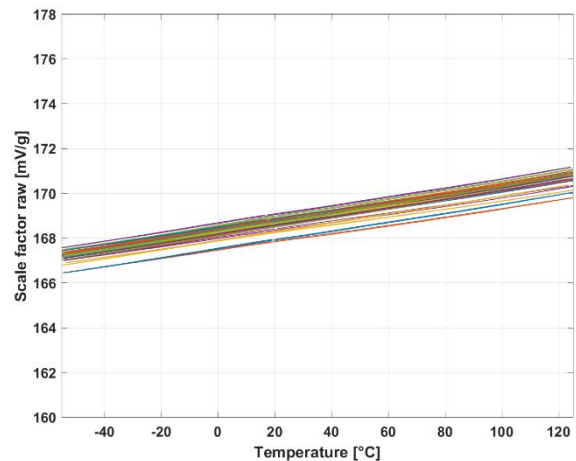


Figure 41: Raw scale factor over [-55°C to +125°C]

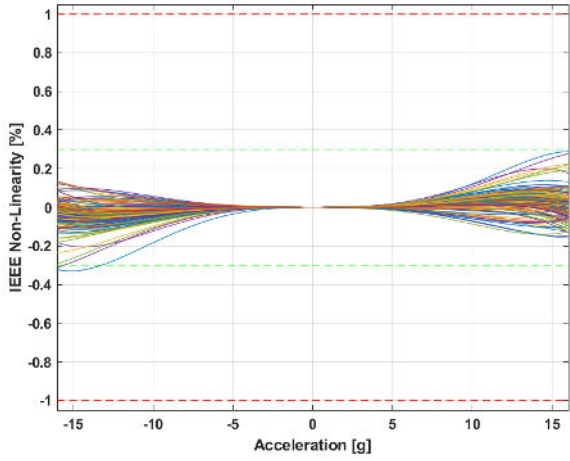


Figure 42 : Non-linearity IEEE

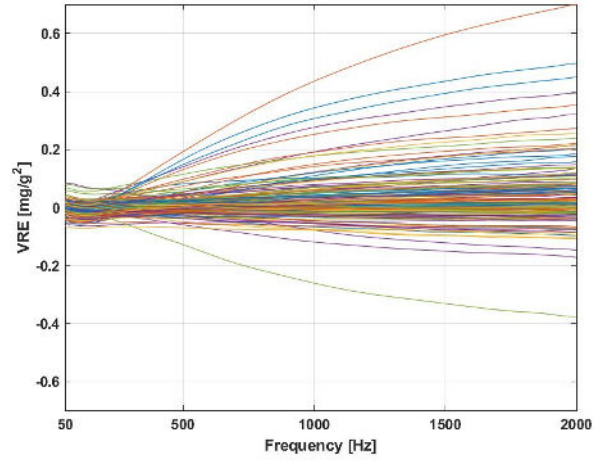


Figure 43: Vibration Rectification Error

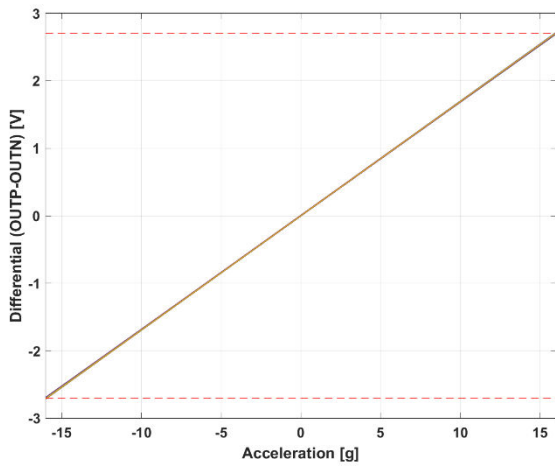


Figure 44 : Differential acceleration output (OUTP-OUTN) at full scale

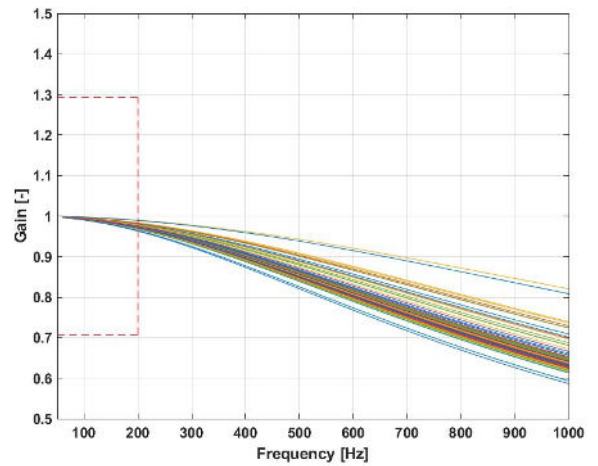


Figure 45 : Frequency response

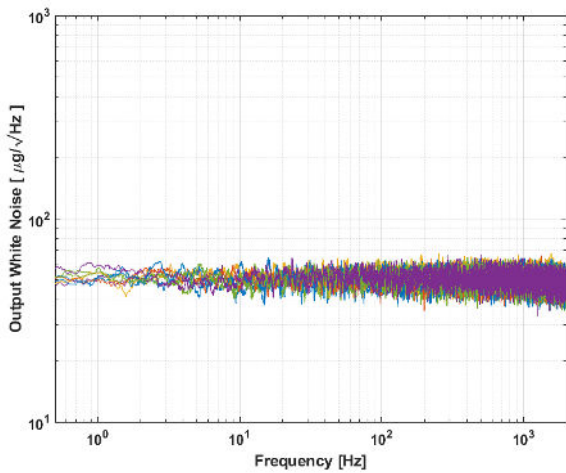


Figure 46: Typical white noise

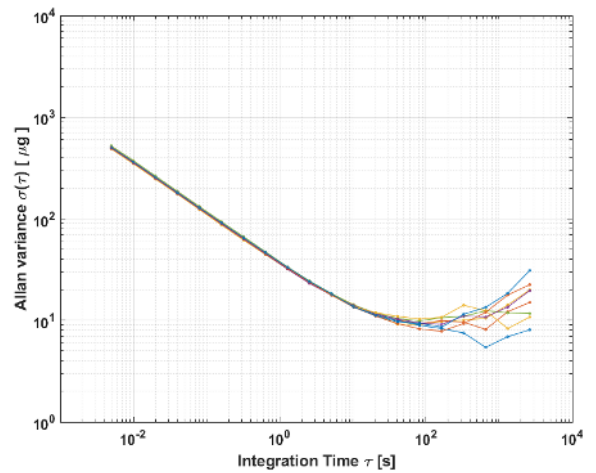


Figure 47: Allan Variance

MS1030: Typical initial performances on multiple sensor at 3.3 VDC supply voltage (V_{DD}) and ambient temperature for all graphs, unless otherwise stated (multiple sensor: multiple color line / min/max: red line / typical value: green line).

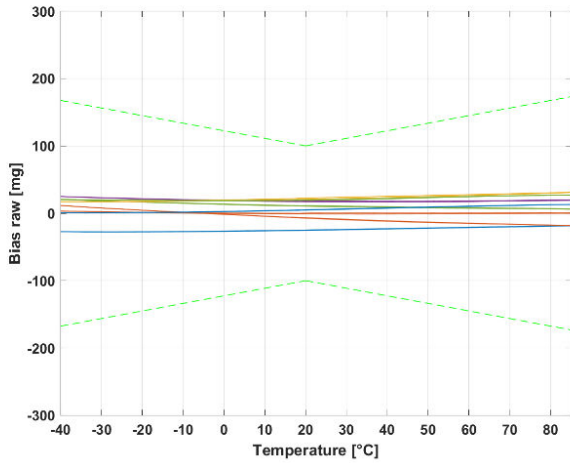


Figure 48: Raw bias over temperature

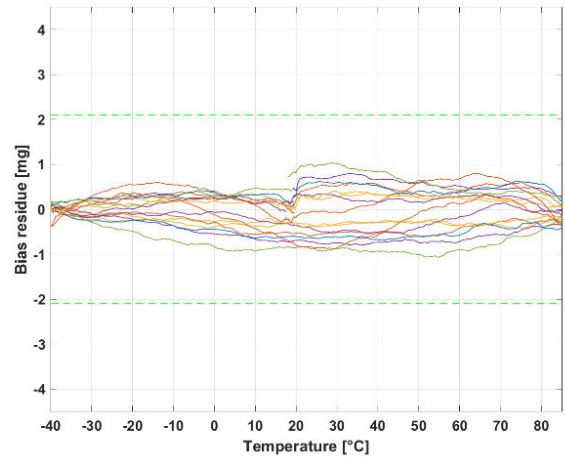


Figure 49: Residual bias over temperature

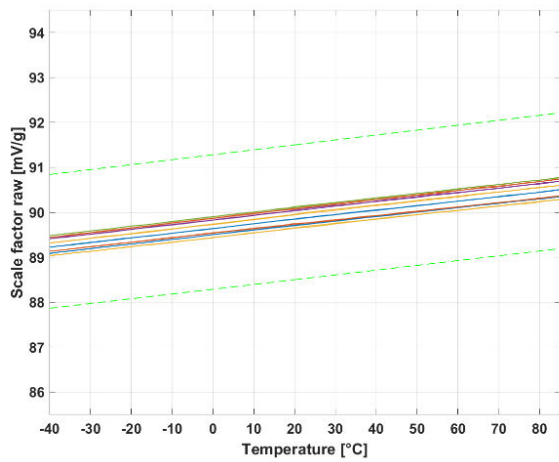


Figure 50: Raw Scale Factor over temperature

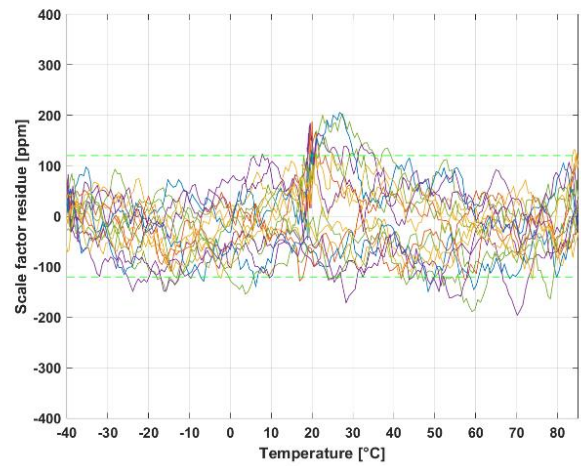


Figure 51: Residual Scale Factor over temperature

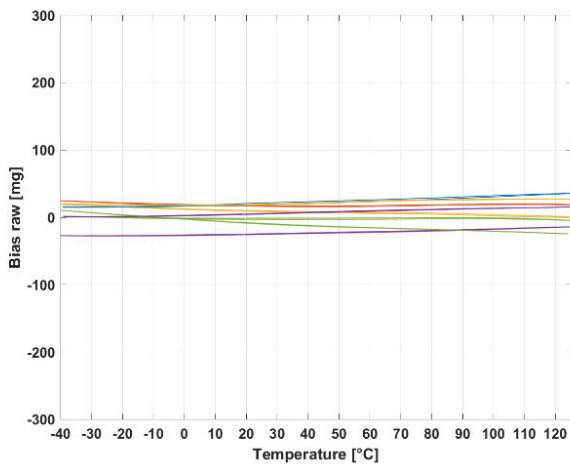


Figure 52: Raw bias over [-40°C to +125°C]

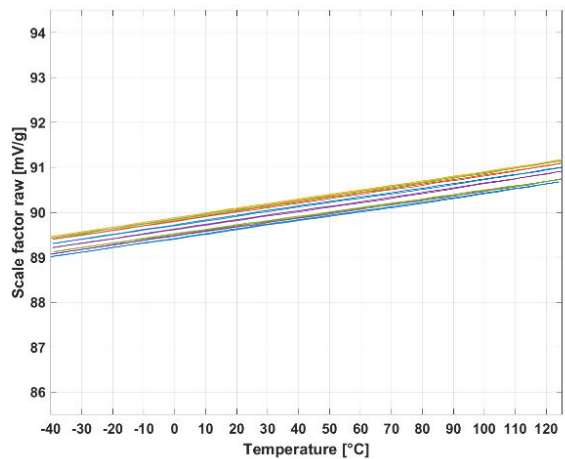


Figure 53: Raw scale factor over [-40°C to +125°C]

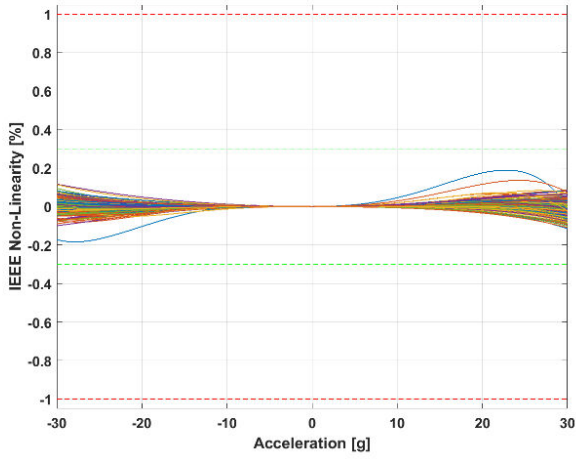


Figure 54 : Non-linearity IEEE

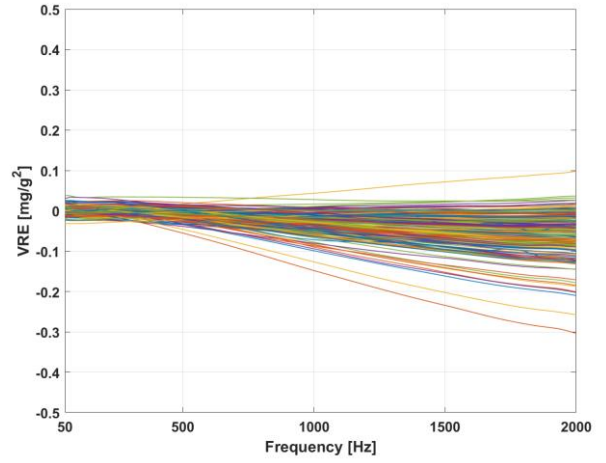


Figure 55: Vibration Rectification Error

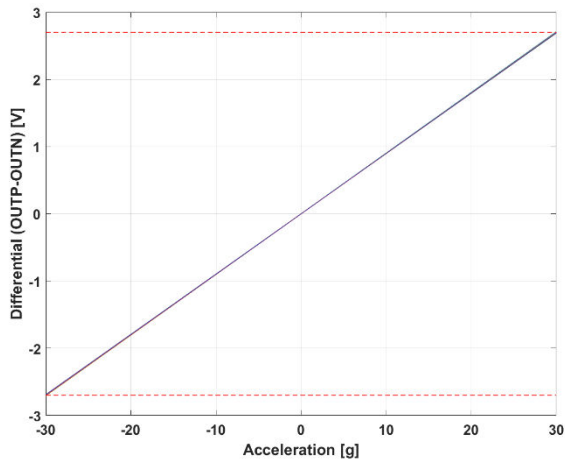


Figure 56 : Differential acceleration output (OUTP-OUTN) at full scale

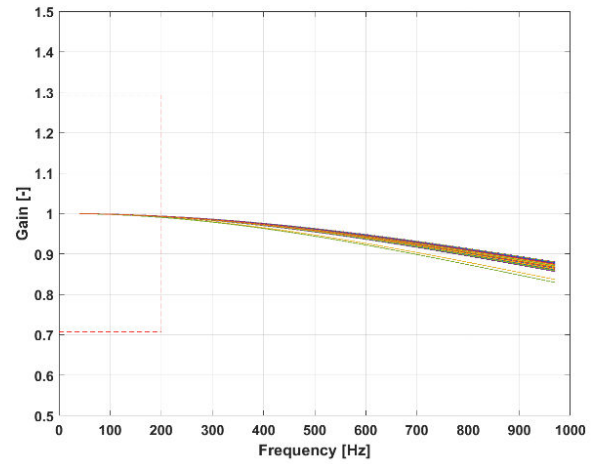


Figure 57 : Frequency response

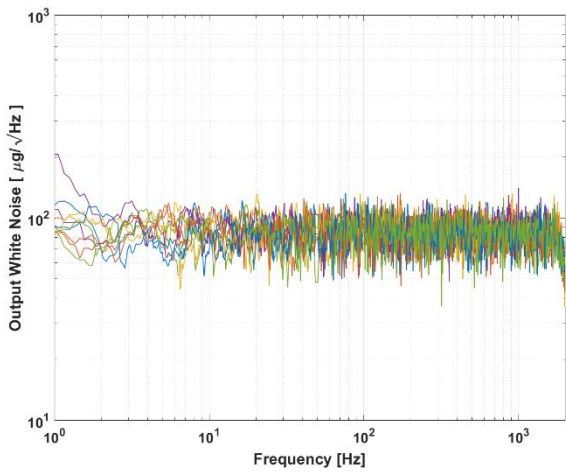


Figure 58: Typical white noise

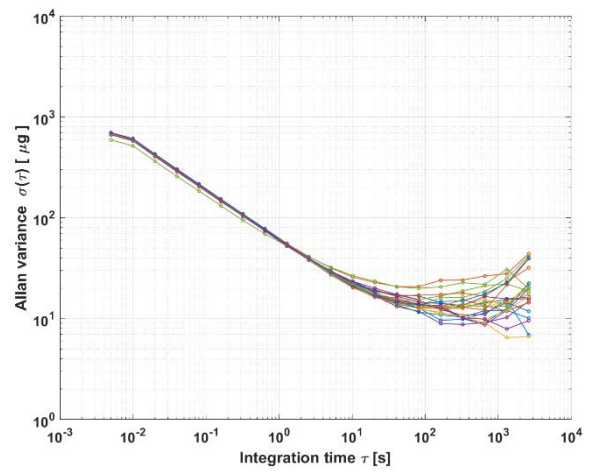


Figure 59: Allan Variance

MS1050: Typical initial performances on multiple sensor at 3.3 VDC supply voltage (V_{DD}) and ambient temperature for all graphs, unless otherwise stated (multiple sensor: multiple color line / min/max: red line / typical value: green line).

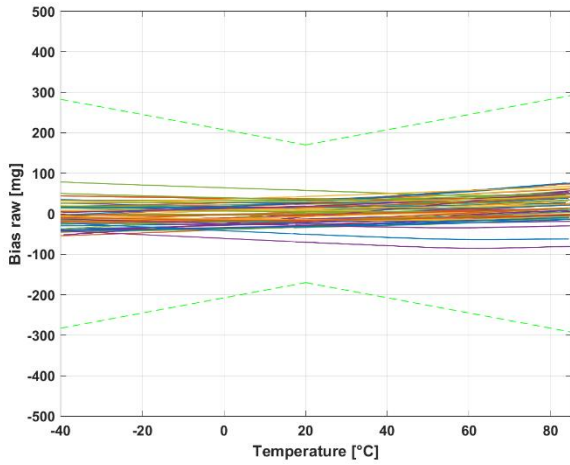


Figure 60: Raw bias over temperature

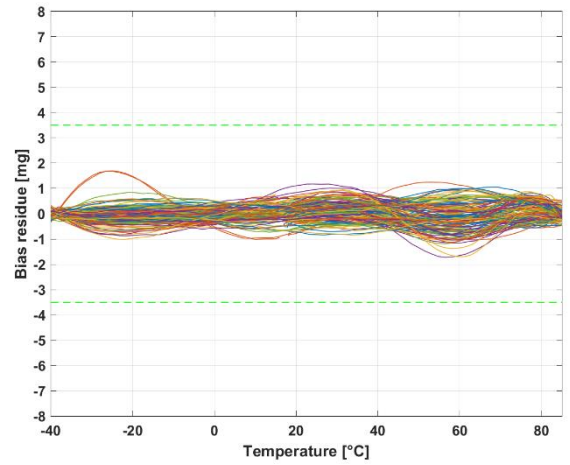


Figure 61 : Residual bias over temperature

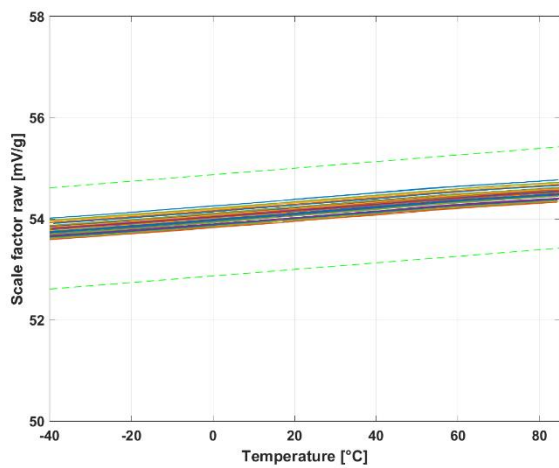


Figure 62: Raw Scale Factor over temperature

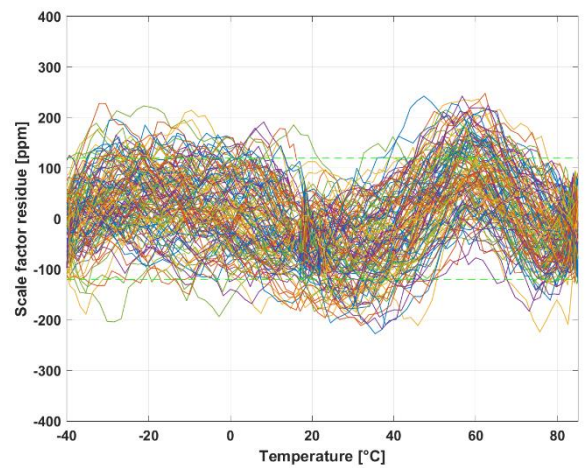


Figure 63: Residual Scale Factor over temperature

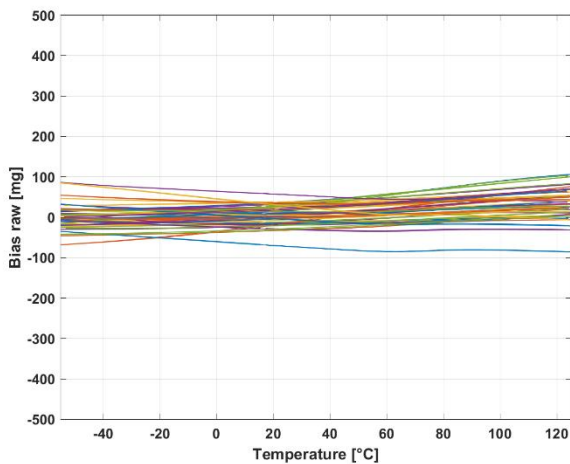


Figure 64: Raw bias over [-55°C to +125°C]

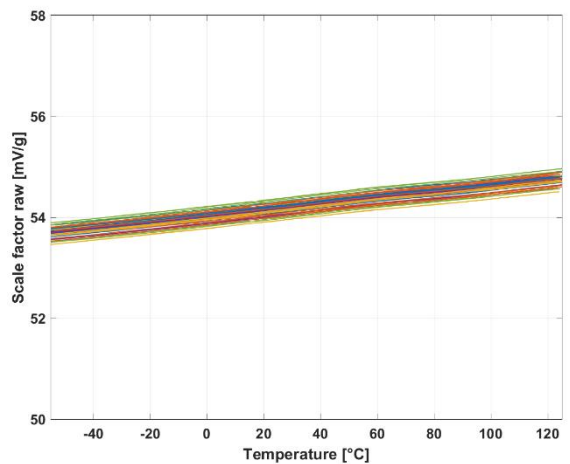


Figure 65: Raw scale factor over [-55°C to +125°C]

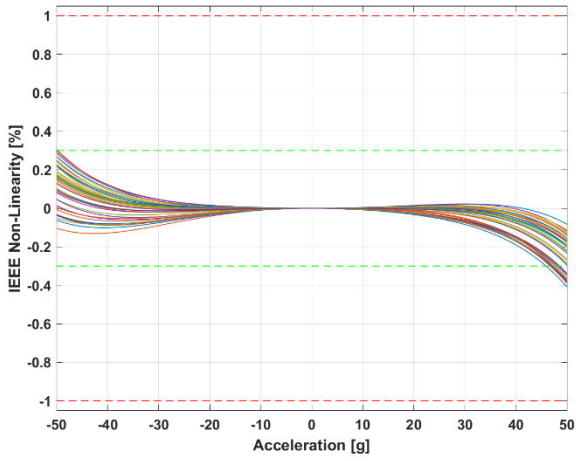


Figure 66 : Non-linearity IEEE

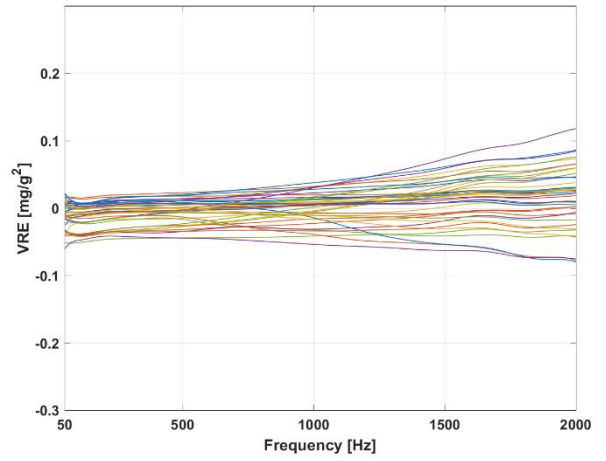


Figure 67: Vibration Rectification Error

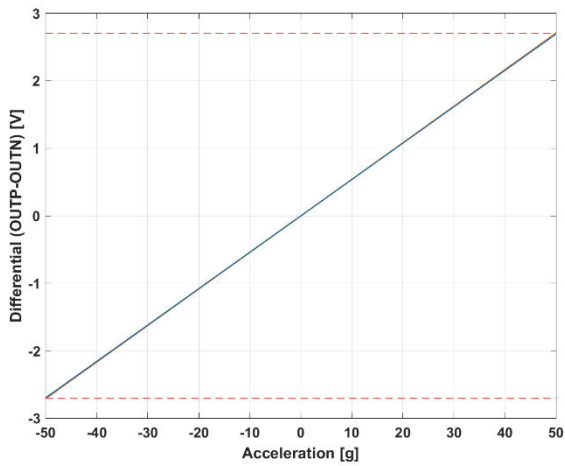


Figure 68 : Differential acceleration output (OUTP-OUTN) at full scale

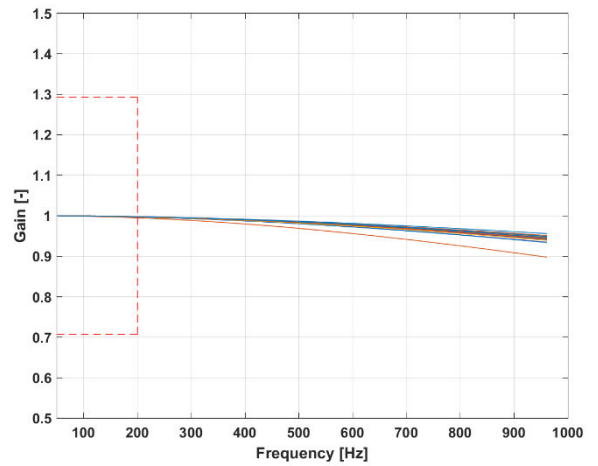


Figure 69 : Frequency response

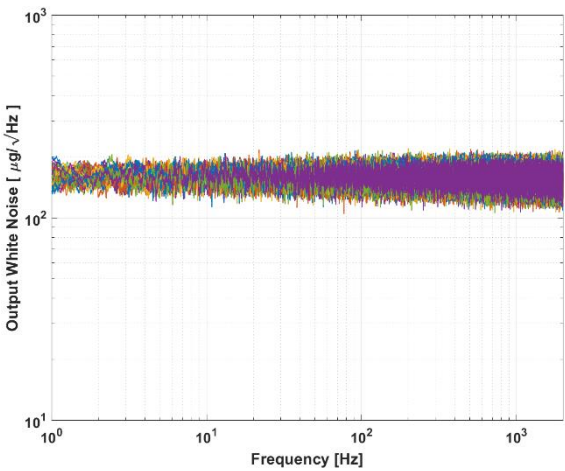


Figure 70: Typical white noise

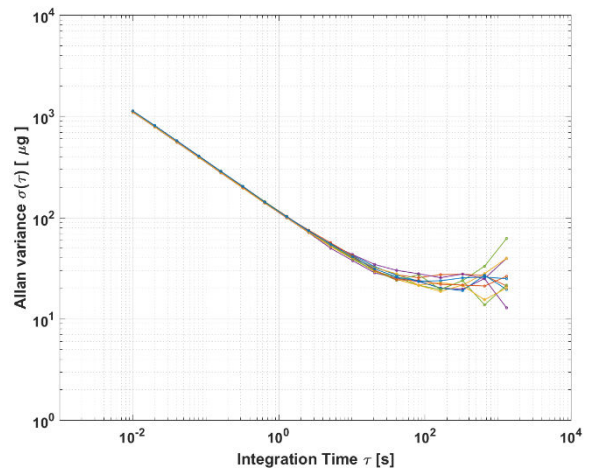


Figure 71: Allan Variance

MS1100: Typical initial performances on multiple sensor at 3.3 VDC supply voltage (V_{DD}) and ambient temperature for all graphs, unless otherwise stated (multiple sensor: multiple color line / min/max: red line / typical value: green line).

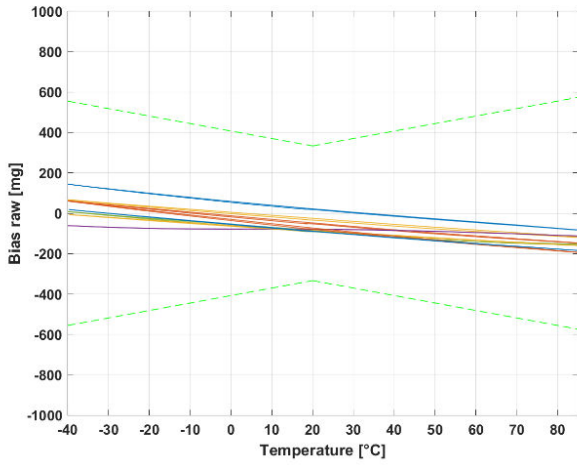


Figure 72: Raw bias over temperature

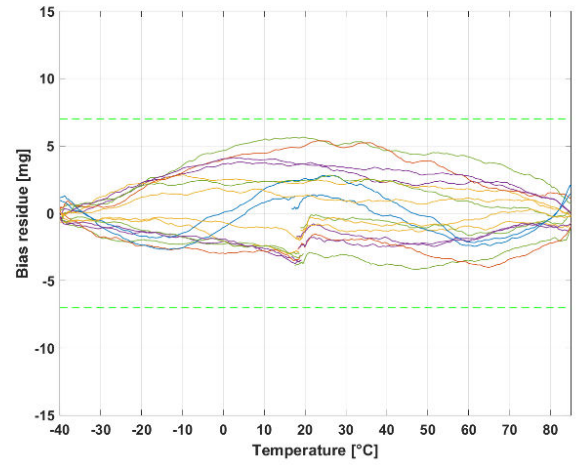


Figure 73 : Residual bias over temperature

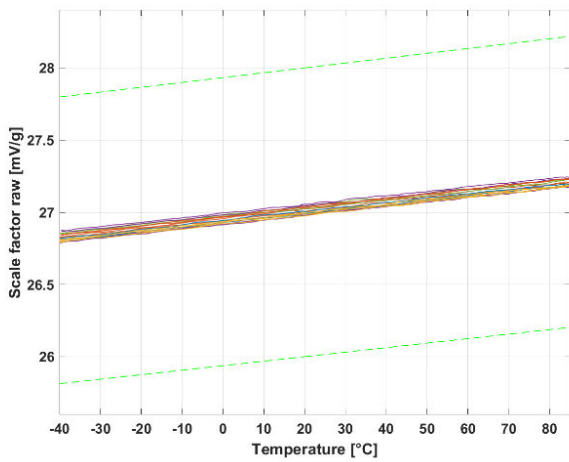


Figure 74: Raw Scale Factor over temperature

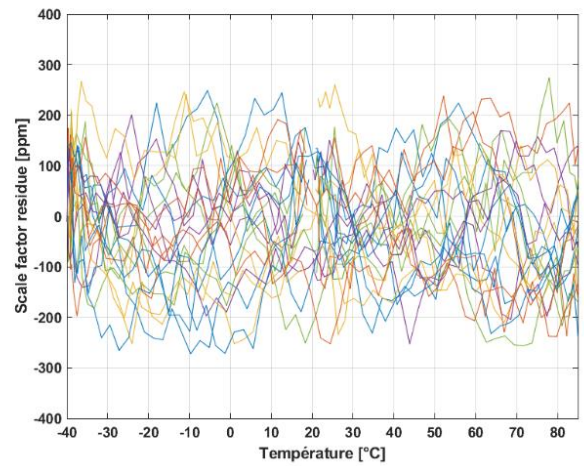


Figure 75: Residual Scale Factor over temperature

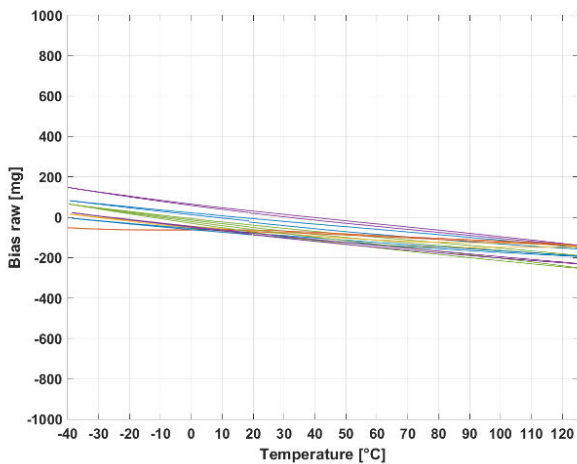


Figure 76: Raw bias over [-40°C to +125°C]

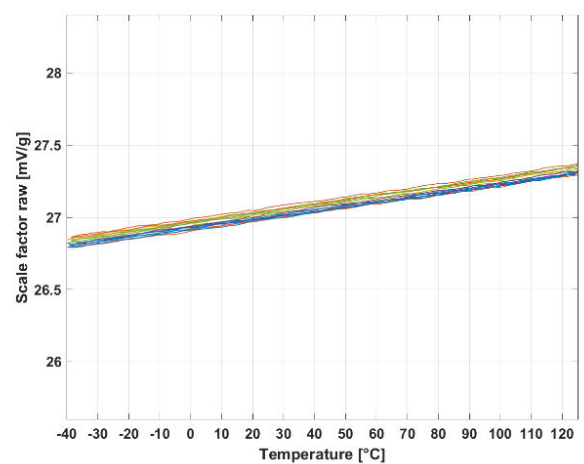


Figure 77: Raw scale factor over [-40°C to +125°C]

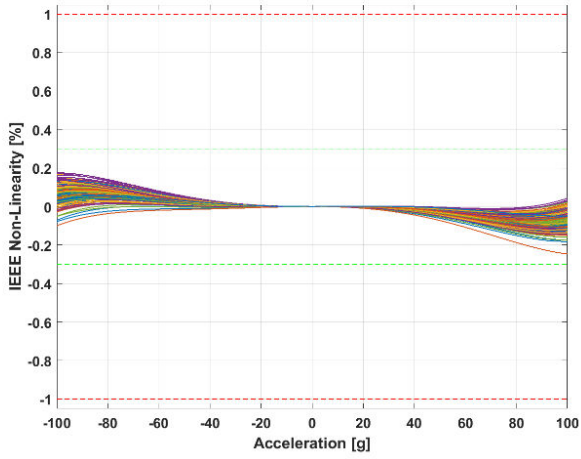


Figure 78 : Non-linearity IEEE

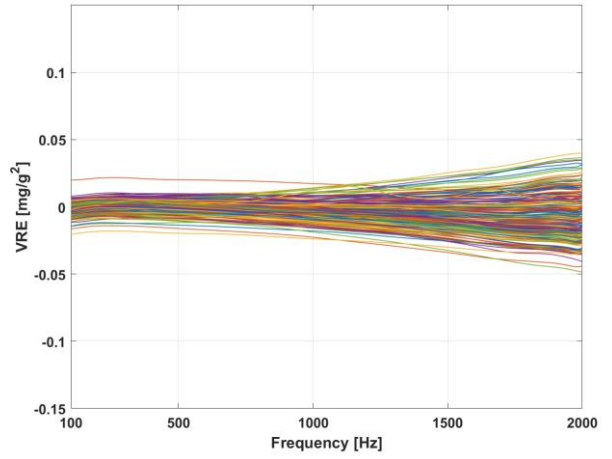


Figure 79: Vibration Rectification Error

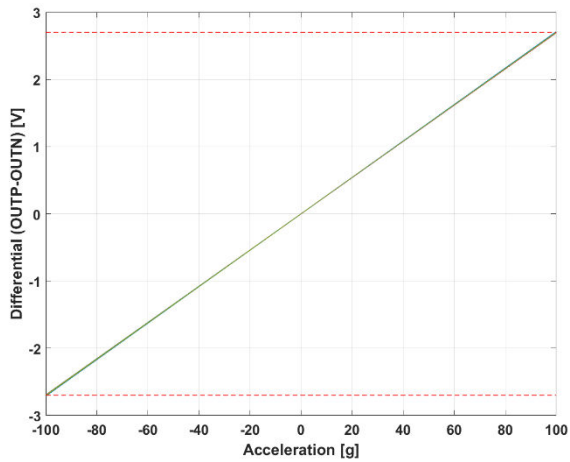


Figure 80 : Differential acceleration output (OUTP-OUTN) at full scale

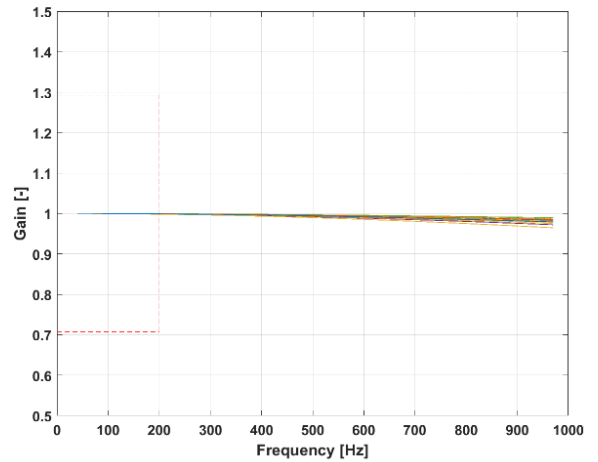


Figure 81 : Frequency response



Figure 82: Typical white noise

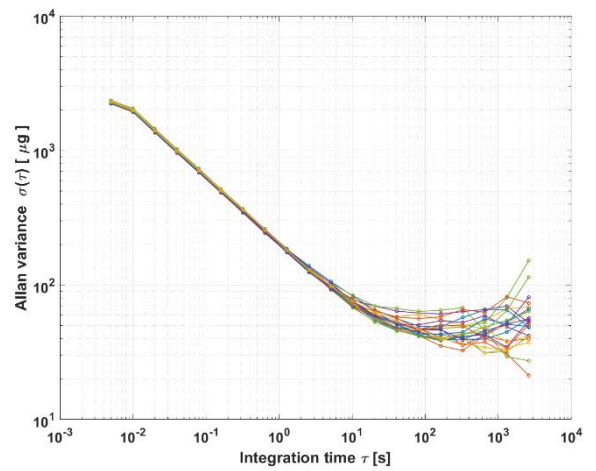


Figure 83: Allan Variance

Pinout description

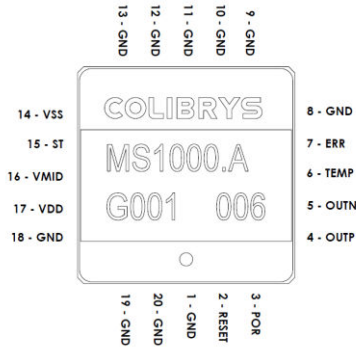


Figure 84: Pinout top view

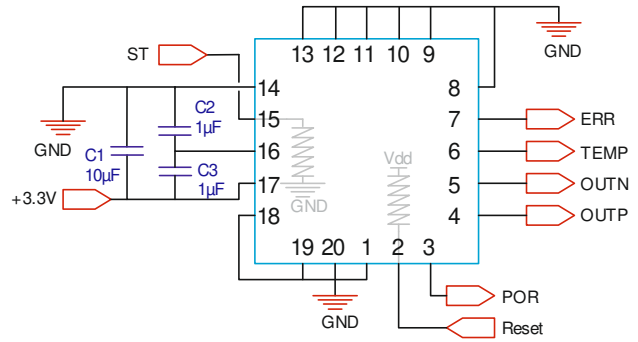


Figure 85: Proximity circuit & internal pull-up/down

The device pin layout is given in Figure 84 and a description of each pin given in the Table 9. The capacitors C1 (10 µF), C2 (1 µF) and C3 (1 µF) are shown in Figure 85 and must be placed as close as possible to the MS1000 package and are used as decoupling capacitors and for a proper sensor startup.

Pin Nb.	Pin name	Type	Description
2	RESET	LI, PU	System reset signal, active low
3	POR	LO	Power On Reset
4	OUTP	AO	Differential output positive signal
5	OUTN	AO	Differential output negative signal
6	TEMP	AO	Temperature analogue output
7	ERR	LO	Error signal (flag)
14	V _{SS} (0 V)	PWR	Connect to ground plane
15	ST	LI, PD	Self-test activation, active high
16	V _{MID}	AO	Internal electronic circuit reference voltage. For decoupling capacitors only
17	V _{DD} (3.3 V)	PWR	Analogue power supply
1,8,9,10,11, 12,13,18,19,20	GND	GND	Must be connected to ground plane (GND)

PWR, power / AO, analog output / AI, analog input / LO, logical output / LI, logical input / PD, internal pull down / PU, internal pull up

Table 9: MS1000 pinout description

Electrical Functions description

Introduction

MS1000 has electrical logic function embedded such as Power-On-Reset, External reset, Built in Self-test and Overload error detection. All those functions are described below.

POR (Power-On-Reset) function

The POR block continuously monitors the power supply during startup as well as normal operation. It ensures a proper startup of the sensor and acts as a brownout protection in case of a drop in supply voltage.

During sensor power on, the POR signal stays low until the supply voltage reaches the POR threshold voltage (V_{TH}) and begins the startup sequence (see Figure 86). In case of a supply voltage drop, the POR signal will stay low until the supply voltage exceeds V_{TH} and is followed by a new startup sequence. The ERR signal is high (equal to V_{DD}) until the startup sequence is complete.

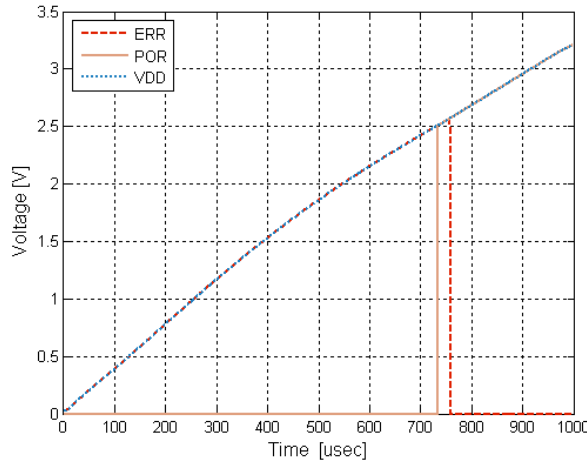


Figure 86: Typical sensor power sequence using the recommended circuit

External Reset

An external reset can be activated by the user through the RESET input pin. During a reset phase, the accelerometer outputs (OUTP & OUTN) are forced to $V_{DD} / 2$ and the error signal (ERR) is activated (high), see Figure 87.

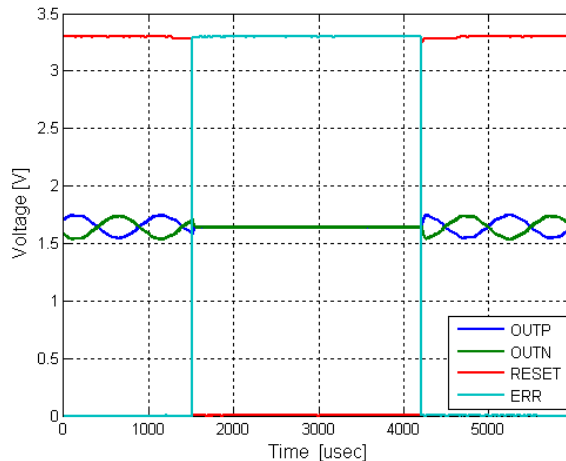


Figure 87: Typical sensor reset sequence with external reset

Built-in Self-Test function

The built-in Self-Test mode generates a square wave signal on the device outputs (OUTP & OUTN) and can be used for device failure detection (see Figure 88).

When activated, it induces an alternating electrostatic force on the mechanical sensing element and emulates an input acceleration at a defined frequency. This electrostatic force is in addition to any inertial acceleration acting on the sensor during self-test; therefore, it is recommended to use the self-test function under quiescent conditions.

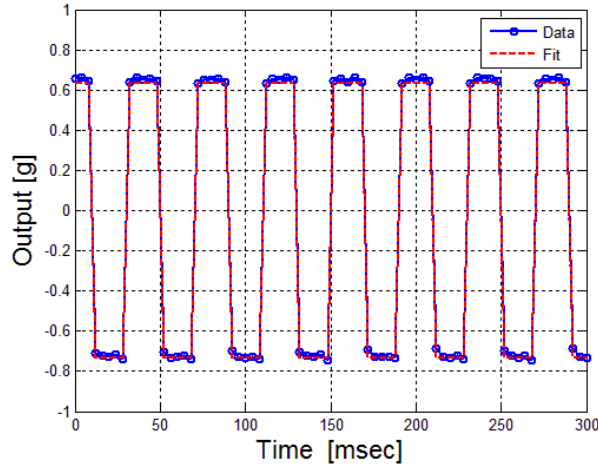


Figure 88: Built-in Self-Test signal on the differential acceleration output (frequency: 24 Hz / amplitude 1.3 g)

Overload and error function

The device continuously monitors the validity of the accelerometer output signals. If an error occurs, the ERR pin goes high and informs the user that the output signals are not valid. An error can be raised in the following cases:

- Out-of-tolerance power supply voltage (POR low), such as during power on
- During external reset phase (user activation of the reset)
- Under high acceleration overload (e.g. high shock)

Upon a high-amplitude shock, the internal overload circuit resets the electronics and initiates a new startup of the readout electronics. This sequence is repeated until the acceleration input signal returns to normal operation range. This behavior is illustrated on the figure below with a large shock of amplitude 500 g: the overload protection is active during the shock and the sensor is fully operational once the acceleration is within the operating range

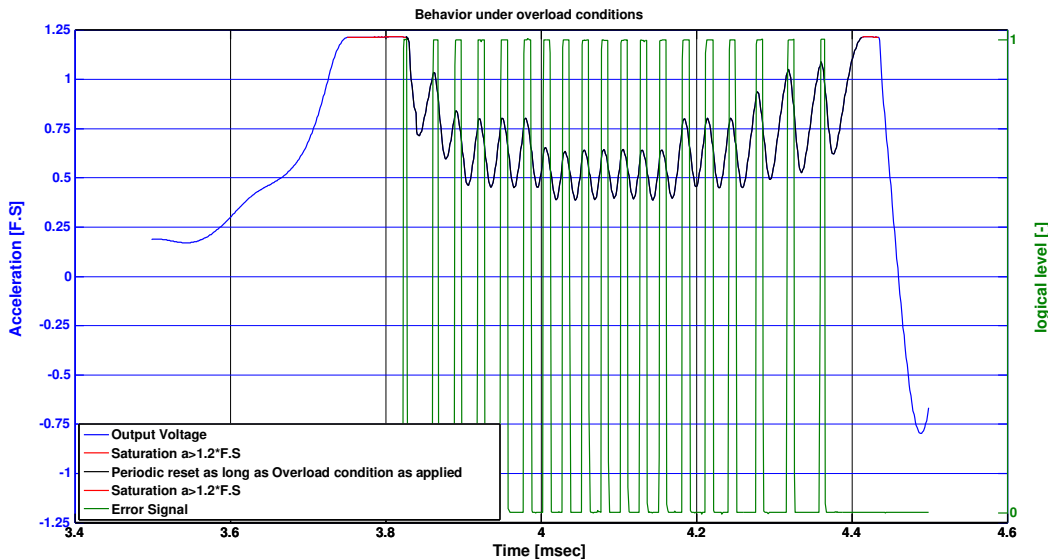


Figure 89: Overload Behavior

Dimensions and package specifications

The outline of the LCC20 ceramic package and the Center of the Proof Mass (●) are illustrated in the Figure 90.

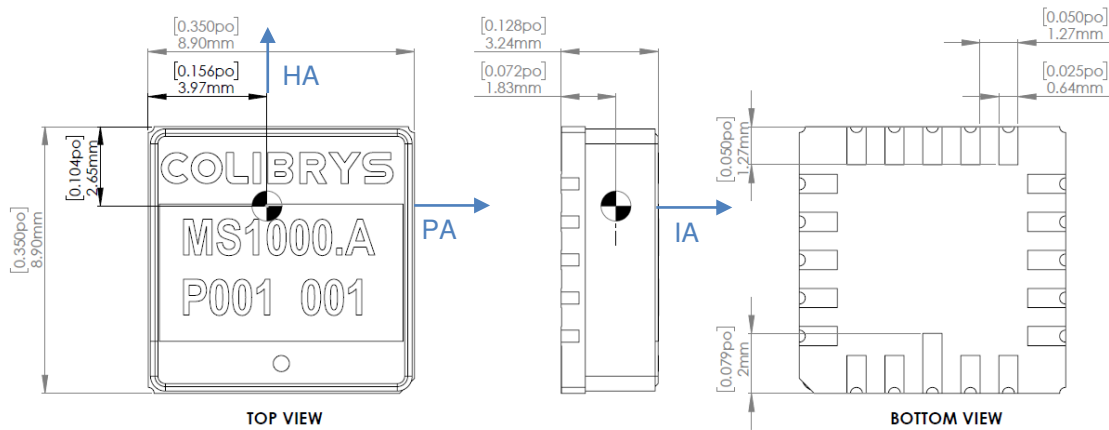


Figure 90: Package mechanical dimension. Units are mm [inch]

Parameter	Comments	Min	Typ	Max	Unit
Lead finishing	Au plating	0.5		1.5	µm
	Ni plating	1.27	4	8.89	µm
	W (tungsten)	10		15	µm
Hermeticity	According to MIL-STD-883-G			5·10 ⁻⁸	atm·cm ³ /s
Weight				1.5	grams
Size	X		8.9	9.2	mm
	Y		8.9	9.2	mm
	Z		3.23	3.5	mm
Packaging	RoHS compliant part. Nonmagnetic, LCC20 pin housing.				
Proximity effect	The sensor is sensitive to external parasitic capacitance. Moving metallic objects with large mass or parasitic effect in close proximity of the accelerometer (mm range) must be avoided to ensure best product performances. A ground plane below the accelerometer is recommended as a shielding.				
Reference plane for axis alignment	LCC must be tightly fixed to the circuit board, using the bottom of the housing as the reference plane for axis alignment. Using the lid as reference plane or for assembly may affect specifications and product reliability (i.e. axis alignment and/or lid soldering integrity)				

Table 10: Package specifications

Recommended circuit

In order to obtain the best device performance, particular attention must be paid to the proximity analog electronics. A proposed circuit that includes a reference voltage, the sensor decoupling capacitors and output buffers is described in Figure 91.

Optimal acceleration measurements are obtained using the differential output (OUTP – OUTN). If a single-ended acceleration signal is required, it must be generated from the differential acceleration output in order to remove the common mode noise.

Block Diagram & Schematic

The main blocks that require particular attention are the power supply management, the accelerometer sensor electronic and the output buffer. The following schematic shows an example of MS1000 implementation.

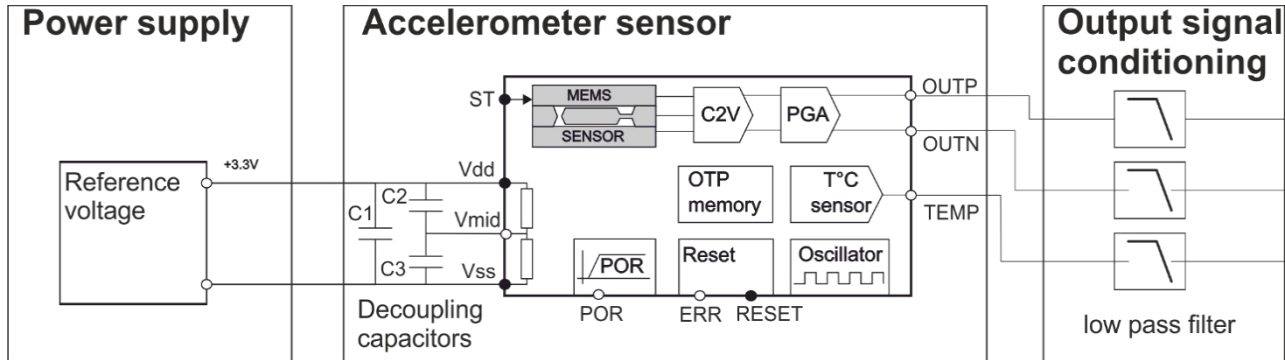


Figure 91: Recommended Block diagram

Power Supply

The accelerometer output is ratiometric to the power supply voltage and its performance will directly impact the accelerometer bias, scale factor, noise or thermal performance. Therefore, a low-noise, high-stability and low-thermal drift power supply is recommended. Key performance should be:

- Output noise < $1\mu\text{V}/\sqrt{\text{Hz}}$
- Output temperature coefficient < $10\text{ppm}/^\circ\text{C}$

The power supply can be used as an output signal in order to compensate any variation on the power supply voltage that will impact the accelerometer signal (ratiometric output).

The electronic circuit within the accelerometer is based on a switched-capacitor architecture clocked at 200 kHz. High-frequency noise or spikes on the power supply will affect the outputs and induce a signal within the device bandwidth.

Accelerometer sensor

The sensor block is composed of the MS1000 accelerometer and the 3 decoupling capacitors: C1 [$10\mu\text{F}$], C2 [$1\mu\text{F}$] and C3 [$1\mu\text{F}$]. These capacitors are mandatory for the proper operation and full performance of the accelerometer. We recommend placing them as close as possible to the MS1000 package on the printed circuit board.

Output signal conditioning

The output signal must be correctly filtered and buffered before data acquisition. We recommend using an ultra-low offset, drift and bias current operational amplifier that match the MS1000 output impedance and a second order low pass filter (LPF) to prevent aliasing of the high frequency noise signal. A second order filter with a 4 kHz cut off frequency will attenuate the noise at 200 kHz by 70dB.

SMD recommendation

A recommended land pattern for LCC20 is shown in the Figure 92. It should be tested and qualified in the manufacturing process. The land pattern and pad sizes have a pitch of 1.27mm and the pin 1 is longer to ensure the right orientation of the product during mounting. After assembly, the orientation can be controlled from the top with an extra point printed on the lid which correspond to pin 1.

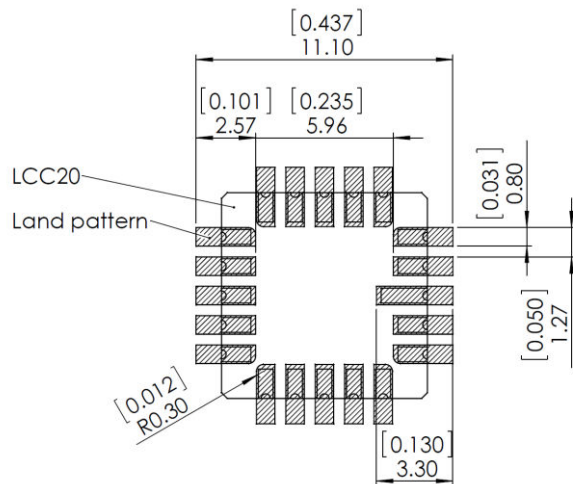


Figure 92 : LCC20 land pattern recommendation (unit are mm/[inch])

The MS1000 is suitable for Sn/Pb and Pb-Free soldering and ROHS compliant. Typical temperature profiles recommended by the solder manufacturer can be used with a maximum ramp-up of 3°C/second and a maximum ramp-down of 6°C/second: The exact profile depends on the used solder paste.

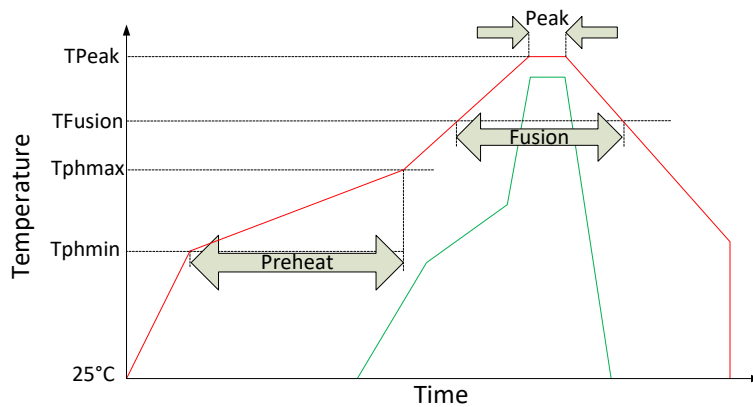


Figure 93: Soldering Temperature Profile

Phase	Sn/Pb		Pb-Free	
	Duration [sec]	Temperature [°C]	Duration [sec]	Temperature [°C]
Peak	10-30	235-240	20-40	245-250
Fusion	60-150	183	60-150	217
Preheat	60-120	Min : 100 Max : 150	60-180	Min : 150 Max : 200

Table 11: Soldering temperatures & times

The cleaning process of electronic boards sometimes involves ultrasounds. This is strongly prohibited on our sensors. Ultrasonic cleaning will have a negative impact on silicon elements which generally causes damages.



Note: Ultrasonic cleaning is forbidden in order to avoid damage of the MEMS accelerometer

Handling and packaging precautions

Handling

The MS1000 is packaged in a hermetic ceramic housing to protect the sensor from the ambient environment. However, poor handling of the product can induce damage to the hermetic seal (Glass frit) or to the ceramic package made of brittle material (alumina). It can also induce internal damage to the MEMS accelerometer that may not be visible and cause electrical failure or reliability issues. Handle the component with caution: shocks, such as dropping the accelerometer on hard surface, may damage the product.



It is strongly recommended to use vacuum pens to manipulate the accelerometers

The component is susceptible to damage due to electrostatic discharge (ESD). Therefore, suitable precautions shall be employed during all phases of manufacturing, testing, packaging, shipment and handling. Accelerometer will be supplied in antistatic bag with ESD warning label and they should be left in this packaging until use. The following guidelines are recommended:

- Always manipulate the devices in an ESD-controlled environment
- Always store the devices in a shielded environment that protects against ESD damage (at minimum an ESD-safe tray and an antistatic bag)
- Always wear a wrist strap when handling the devices and use ESD-safe gloves

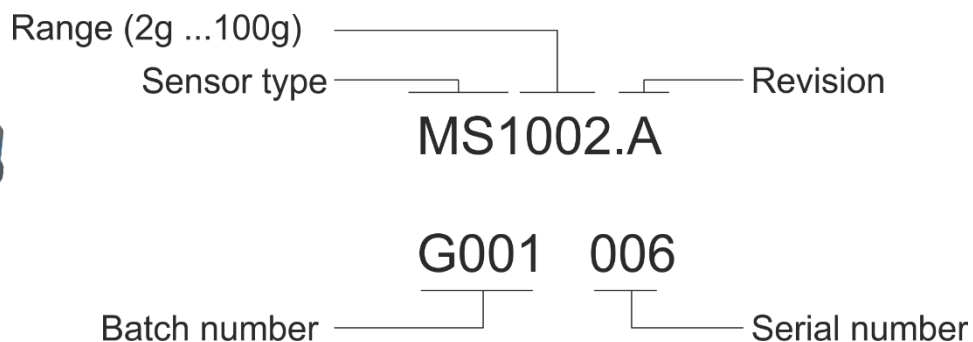
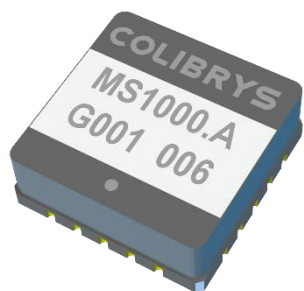


This product can be damaged by electrostatic discharge (ESD). Handle with appropriate precautions.


Packaging

Our devices are placed in trays for shipment and SMD process. They are packed in sealed ESD-inner bag. We strongly advice to maintain our device in its original OEM sealed ESD inner-bag to guarantee storage condition before soldering them.

Product identification markings



Ordering Information

Description	Product	Measurement range
Single analog axis MEMS accelerometer, 	MS1002.A	±2g
	MS1005.A	±5g
	MS1010.A	±10g
	MS1016.A	±16g
	MS1030.A	±30g
	MS1050.A	±50g
	MS1100.A	±100g

Glossary of parameters of the Data Sheet

Accelerometer model

$$\frac{OUT_P - OUT_N}{V_{DD}} * 3.3 = K_1(K_0 + A_s + K_2 \cdot A_s^2 + K_3 \cdot A_s^3 + K_p \cdot A_p + K_h * A_h + K_{sp} * A_s A_p + K_{sh} * A_s A_h + E)$$

A_s, A_p, A_h are the accelerations for each axes of the sensor with:

Input Axis (IA): Sensitive axis

Pendulous Axis (PA): Aligned with the proof mass beam and perpendicular to the input axis

Hinge Axis (HA): Perpendicular to the input and pendulous axes. Direction of the dot.

K_1 is accelerometer scale factor [V/g]

K_0 is bias [g]

K_2 is second order non-linearity [g/g²]

K_3 is third order non-linearity [g/g³]

K_p is pendulous cross-axis [rad]

K_h is output cross-axis [rad]

K_{sp}, K_{io} are cross-coupling coefficients [rad/g]

E is the residual noise [g]

g [m/s²]

Unit of acceleration, equal to standard value of the earth gravity (Accelerometer specifications and data supplied by Safran Timing Technologies SA use 9.80665 m/s²).

Bias [mg]

The accelerometer output at zero g.

Bias temperature coefficient [mg/°C]

Variation of the bias under variable external temperature conditions (slope of the best fit straight line through the curve of bias vs. temperature).

Scale factor [mV/g]

The ratio of the change in output (in volts) to a unit change of the input (in units of acceleration); thus given in mV/g.

Scale factor temperature coefficient [ppm/°C]

Maximum deviation of the scale factor under variable external temperature conditions.

Temperature sensitivity

Sensitivity of a given performance characteristic (typically scale factor, bias, or axis misalignment) to operating temperature, specified generally at 20°C. Expressed as the change of the characteristic per degree of temperature change; a signed quantity, typically in ppm/°C for scale factor and mg/°C for bias. This figure is useful for predicting maximum scale factor error with temperature, as a variable when modelling is not accomplished.

Non-linearity, IEEE [% FS]

Absolute maximum error versus full-scale acceleration

$$NL_{max} \equiv \left| \frac{V - K_1(K_0 + A_s)}{K_1 A_{FS}} \right|_{max} = \left| \frac{K_2 A_s^2 + K_3 A_s^3 + \dots}{A_{FS}} \right|_{max}$$

Frequency response [Hz]

Frequency range from DC to the specified value where the variation in the frequency response amplitude is less than ±3 dB

Noise [µg/√Hz]

Undesired perturbations in the accelerometer output signal, which are generally uncorrelated with desired or anticipated input accelerations.

Long-term repeatability (Bias [mg] & Scale factor [ppm])

Bias and scale factor residue over temperature [-40°C ; 85°C] after applying following environmental conditions:

- 100 x TurnOn / TurnOn
- short-term stability
- Low temperature storage (72h / -55°C)
- High temperature storage (10days / +85°C)
- 100 x temperature cycling [-40°C ; +125°C]
- High Temperature Operating Life (10 days / +85°C / powered)
- vibration (20grms / 10-2'000Hz)
- shock (5 x 500g / 0.5ms / 6 directions)

TurnOn – TurnOn

The accelerometer TurnOn TurnOn bias error is defined as the maximum bias error, when the accelerometer is turned on under defined operational conditions (3.3V supply voltage and ambient temperature).

Vibration Rectification Error (VRE) [$\mu\text{g}/\text{g}^2$]

Steady-state error in the output while vibratory disturbances are acting on an accelerometer

Quality

Safran Timing Technologies SA is ISO 9001:2015



Safran Timing Technologies SA complies with the European Community Regulation on chemicals and their safe use (EC 1907/2006) REACH



MS1000 products comply with the EU-RoHS directive 2011/65/EC (Restrictions on hazardous substances) regulations



Recycling: please use appropriate recycling process for electrical and electronic components (DEEE)



MS1000 products are compliant with the Swiss LSPro : 930.11 dedicated to the security of products

Note:

- *MS1000 accelerometers are available for sales to professional only*
- *Les accéléromètres MS1000 ne sont disponibles à la vente que pour des clients professionnels*
- *Die Produkte der Serie MS1000 sind nur im Vertrieb für kommerzielle Kunden verfügbar*
- *Gli accelerometri MS1000 sono disponibili alla vendita soltanto per clienti professionisti*

Safran Timing Technologies SA complies with due diligence requirements of the Conflict Minerals Regulation



Disclaimer

Safran Timing Technology SA (STT) reserves the right to make changes to products without any further notice.

Performance may vary from the specifications provided in STT' datasheet due to different applications and integration. Operating performance, including long-term repeatability, must be validated for each customer application by customer's technical experts. The long-term repeatability specification expressed in the datasheet is valid only in the defined environmental conditions (cf Long-term repeatability glossary), and the performance at system level remains the customer's responsibility.

The degolding process applied to the products is excluded from STT recommendations. And if applied, cancels any products warranty and liability.

USE OF THE PRODUCT IN ENVIRONMENTS EXCEEDING THE ENVIRONMENTAL SPECIFICATIONS SET FORTH IN THE DATASHEET WILL VOID ANY WARRANTY. SAFRAN TIMING TECHNOLOGIES SA HEREBY EXPRESSLY DISCLAIMS ALL LIABILITY RELATED TO USE OF THE PRODUCT IN ENVIRONMENTS EXCEEDING THE ENVIRONMENTAL SPECIFICATIONS SET FORTH IN THE DATASHEET.

POWERED BY TRUST

Safran Timing Technologies SA

sales@colibrys.com