

License File Loading Instructions

GSG StudioView is used to load a license file. This is an interface that allows a connection to the unit and uploads firmware and scenario files. The latest version of the StudioView software can be obtained from the Spectracom website at:


<https://files.orolia.com/public-downloads/gsg-56-update-files-and-documentation>

In order for the instrument to communicate with the PC Software the NI VISA runtime is required. NI VISA runtime can be downloaded directly from the National Instruments website.

Once the VISA Runtime and the GSG StudioView are installed, open GSG StudioView. Close the Application tips screen (if necessary) and from the TOOLS menu, select Uploader.

On the Uploader screen press the connections icon  to open the connections window. On the connections window, all connections for GPIB and USB are shown in the list. To refresh the list and

search for more GPIB or USB devices, press the refresh button  to scan for devices. To add an

Ethernet device press the add new device button  and enter the name and IP address. See Figure

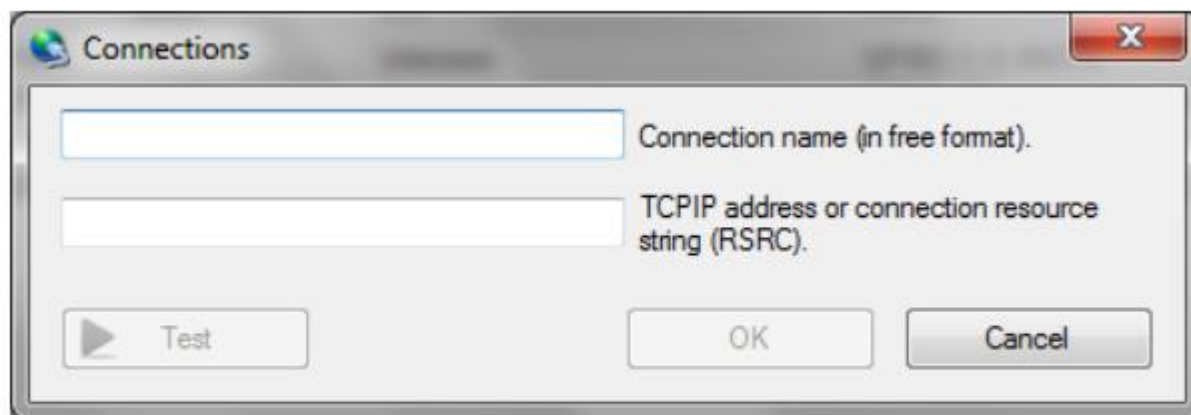


Figure 3. Adding a device connected via Ethernet

To see the IP or change the interface method, select Interface and reference from the Options menu. See Figure 4. Note: This screen varies based on current firmware version.

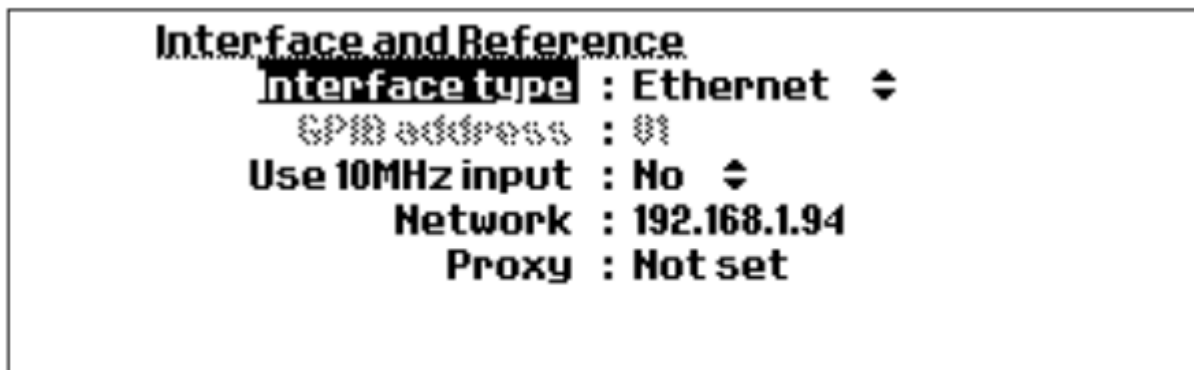


Figure 4. Interface selection screen.

To ensure proper connection of the Ethernet connected unit, press the Test button on the Add a device screen. The response should look like Figure 5 with the appropriate serial number and equipment information.

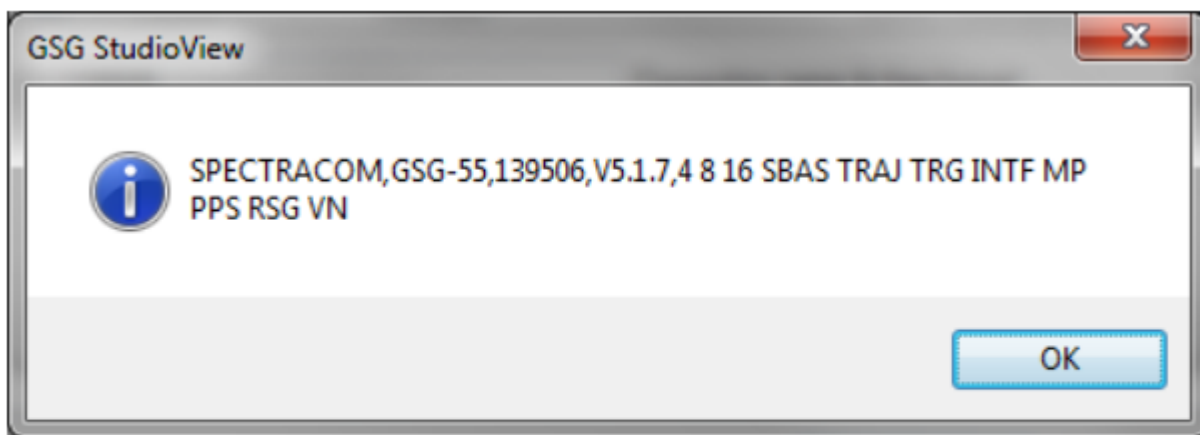
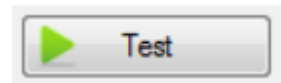


Figure 5. IDN Query Reply

In order to load the license, press the Open button (next to select file for uploading), and navigate to the downloaded file on the PC. Press the Start button to begin the update. When it is complete the front panel of the GSG will ask you to restart the unit or will reboot itself. (Firmware version dependent). After the unit reboots, you can verify that the option has been installed from the Options menu by selecting Show system information. See Figure 1. With Options highlighted, press the enter key. Then use the arrow keys to verify the installed options.



Figure 6. Options View

The latest GSG manuals and documentation can always be found at:

<https://www.orolia.com/gsg-5-6-onboarding/>

For questions regarding this topic please contact Orolia Customer Services @ www.orolia.com/support