

Skydel Software Evaluation

Orolia is pleased to offer you the ability to obtain a trial version of Skydel software for evaluation purposes. To set up Skydel please follow the instructions in this guide.

Before starting the evaluation of the software please have a look to our online user manual:

http://manuals.spectracom.com/skydel/index.html#_help

Skydel Software only evaluation

For an evaluation of the software only (i.e., without RF signal generation) please make sure to have access to a computer with at least the minimum recommended configuration here:

http://manuals.spectracom.com/skydel/index.html#_minimal_computer_requirements

Full Skydel simulator evaluation

Building an actual Skydel simulator (i.e., with RF signal generation) is a more complex process. Please make sure to read carefully all the instructions given in this section:

<http://manuals.spectracom.com/skydel/index.html#hardware-setup>

If you have any doubt regarding the process or the required configuration, please contact the pre-sales support simulation team: SimulationPreSalesSupport@orolia.com

For both solutions (Skydel software only or Skydel simulator) the supported OS are Windows 10 or Ubuntu 18.04 (recommended).

If you plan to use the computer remotely, please use commercial solutions like TeamViewer. The license manager is not compatible with Windows Shared Desktop.

Instructions

First, open the following link in your browser:

url: users.skydelsolutions.com

username: skydel

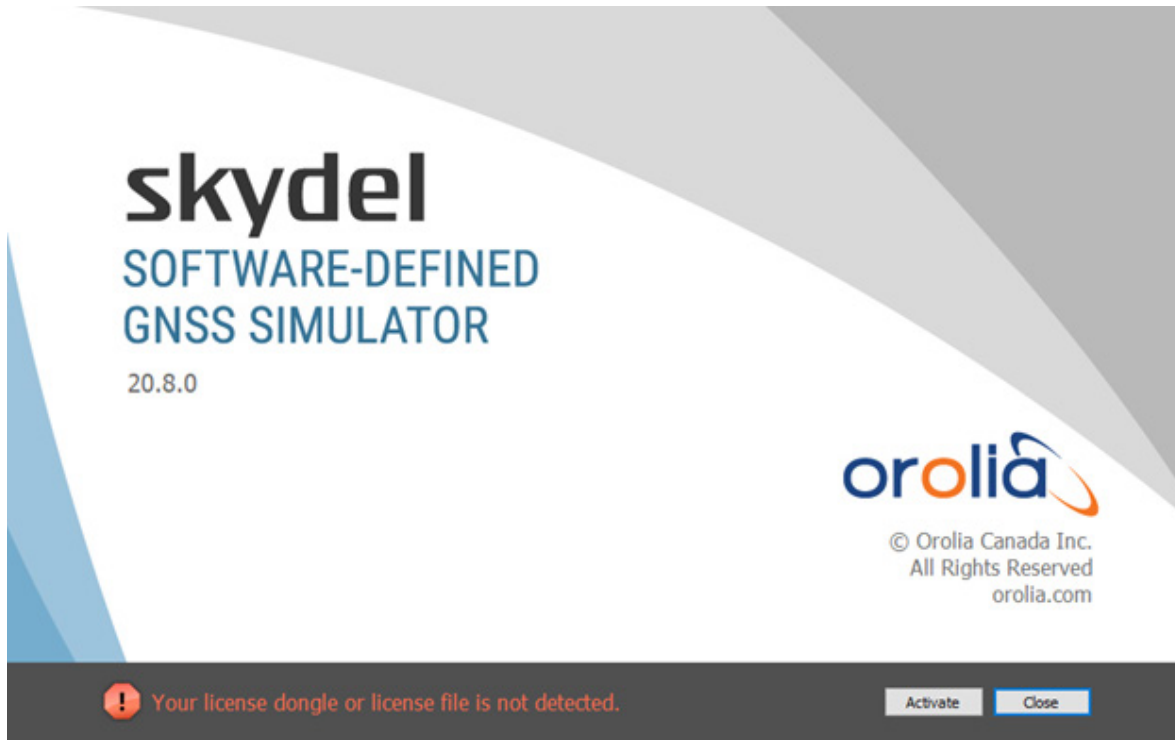
password: f9H3q\$Wp34cv

Download the installer for your operating system and install it on your PC.

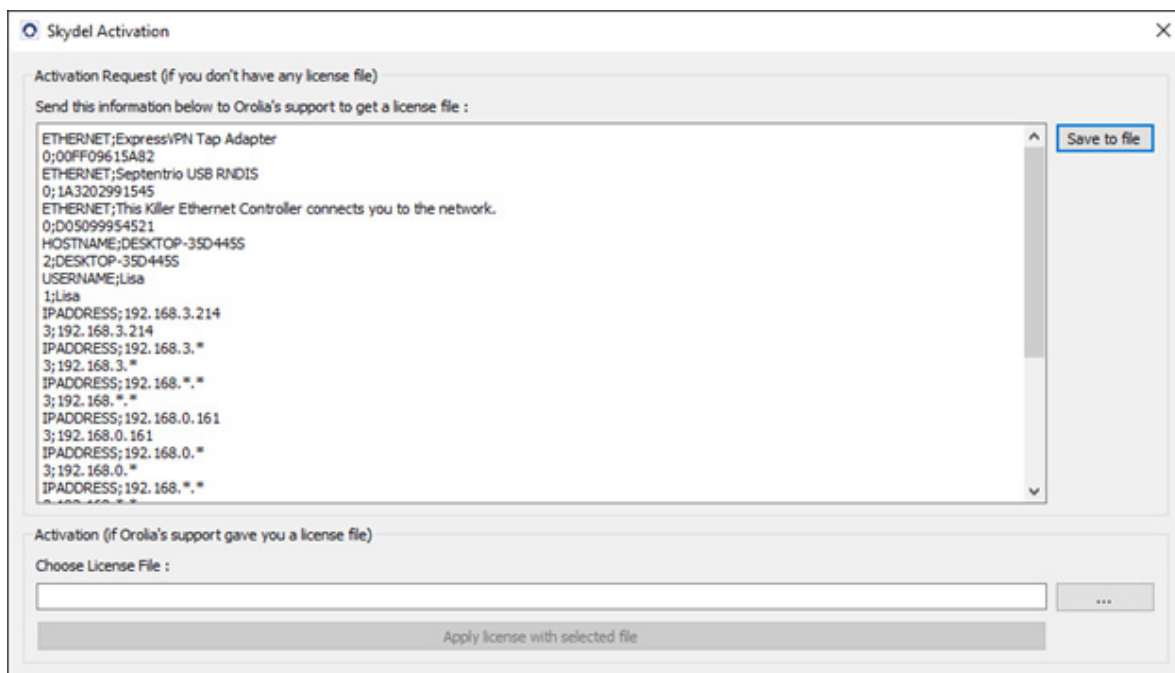
The first time you launch Skydel, you will need to activate the temporary license.

Please follow these instructions:

1. Launch Skydel SDX. You should see the following message on the splash screen:

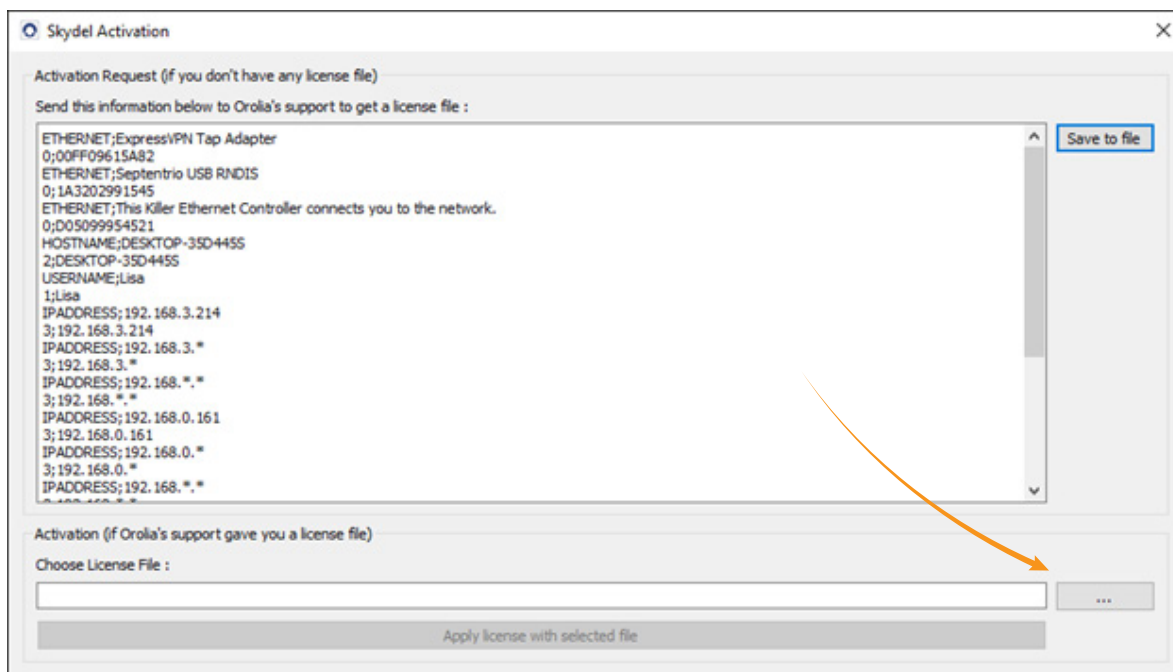


2. Click the Activate button. Skydel will open the following window:



Skydel will automatically fetch information on your computer. This information will be used to generate a license to use Skydel that will work only on this computer.

3. Click the Save to file button, locate the generated file (*.info) on the computer.
4. Fill out this form: [Skydel License Request form](#) then send your (*.info) file to Orolia by email at the following email address: SimulationPreSalesSupport@orolia.com. Be sure to specify that you want a trial license. The Skydel support team will send you back a license file with a .lic extension.
5. Save the .lic file on your computer and restart Skydel.
6. Follow steps 2 and 3 above, but this time, instead of saving information to file, choose the license file (.lic). You may click on the “...” button to locate the .lic file.



7. Click *Apply license with selected file* button.
8. Restart Skydel.

For technical assistance, please contact SimulationPreSalesSupport@orolia.com

On behalf of the entire team at Orolia, thank you for evaluating Skydel.